

**LINEAR** 11 W TUNEABLE WHITE SIDE BEND

# NEON 1617

IP67	Single Binning	LM 80	CRI 92+	5 Year	TM66 ASSESSED	Flame Resistant	IK10	Saltwater Resistant	UV Protection	Solvent Resistant	Dust Proof
------	----------------	-------	---------	--------	---------------	-----------------	------	---------------------	---------------	-------------------	------------

## DESCRIPTION

Our Tuneable White Side Bend LED NEON FLEX 1617 is crafted from Dow Chemical SILASTIC™ ET-7021 silicone rubber, offering exceptional transparency and strength. Manufactured using an integrated extrusion moulding process with environmental protection grade silicone, this product features a unique optical light distribution design for a uniform, shadow-free lighting surface. We use a matt finish that is anti-dust and more robust against UV exposure, ensuring long-lasting performance and maintaining a clean, high-quality appearance over time.

## PRODUCT SPECIFICATION

Product Code	NS1617T3
Dimensions	W: 16mm, H: 17mm
Cutting Interval	71.43mm
Bend Direction	Side Bend
Minimum Bend Diameter	≥200mm
Colour Temperature <sup>1</sup>	2700K-6500K, Tuneable White
Bin/step	Single Bin
Lifetime	≥50,000 hours
Environment T <sub>a</sub>	-25°C to 55°C
IP Rating	IP65, IP67
Mounting <sup>2</sup>	Clips and Profile
Connection <sup>1</sup>	Injection Moulds
Certifications	UL, CE, RoHS

## PERFORMANCE DATA

Power Consumption	11W/m
Supply Voltage	24V DC
Lumens/Metre <sup>1</sup>	760-880 Lm/m
Lumen Efficiency <sup>1</sup>	69-80 Lm/m
L70	161,000 hours
L80	102,000 hours
Max Length	6,000mm
Beam Angle	120°
CRI	92+
Dimmable	Yes

<sup>1</sup> See Page 2 for further information.  
<sup>2</sup> See Page 3 for further information.



**UK BESPOKE MACHINE INJECTION MOULDING**  
 Our factory-sealed ends ensure an ultra durable, waterproof and seamless installation

**FIND OUT MORE** →

**fossLED UK Operations Centre**  
 Unit C9 & C10 Lakeside, Neptune Close,  
 Medway City Estate, Rochester, Kent,  
 ME2 4LT, United Kingdom



**sales@fossled.co.uk**  
 +44 (0)203 198 1908  
 www.fossled.com  
 V1-MS260520

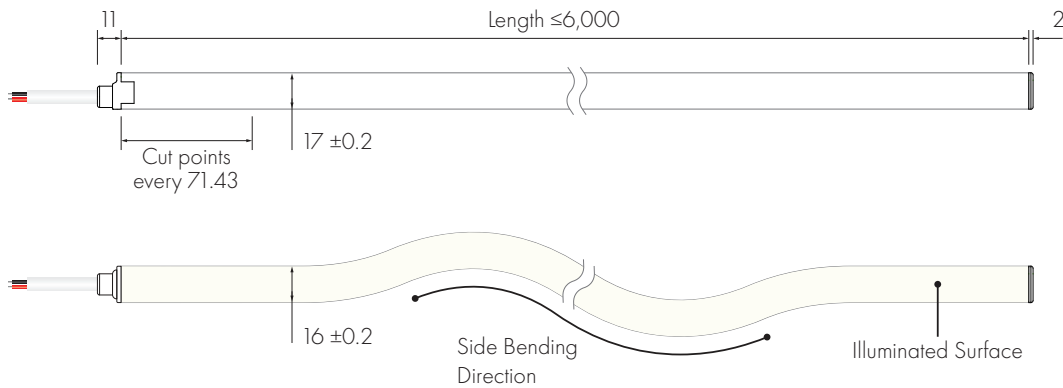


## TUNEABLE WHITE TEMPERATURE DATA

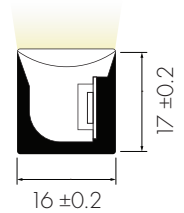
CCT (K)	CRI	Voltage	Power (W/m)	Lumen (Lm/m)	Efficiency (Lm/W)	Unit Length (mm)	Max. Run Length (M)
2700K-6500K	92+	DC24V	11	760-880	69-80	71.43	6

The given data are typical values due to the tolerances of the production process and the electrical components, values for light output and electrical power can vary up to 10%.

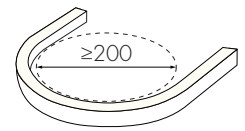
### DIMENSIONS [mm]



### Cross Section



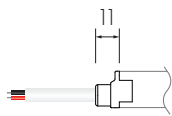
### Min Bending Diameter



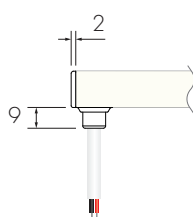
Shown with **FF** Front Feed and **EE** End Injection Moulds

### CABLE FEED/END TYPES

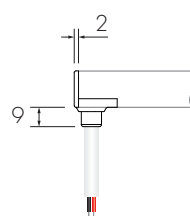
#### FF/EF Front Injection Mould



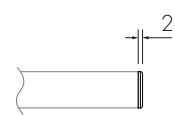
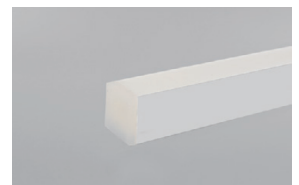
#### FL/FR/EL/ER Side Injection Mould



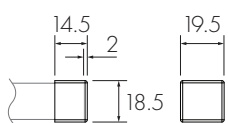
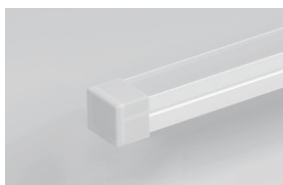
#### FB/EB Bottom Injection Mould



#### EE End Injection Mould



### EES End Silicone Cap



fossLED UK Operations Centre  
Unit C9 & C10 Lakeside, Neptune Close,  
Medway City Estate, Rochester, Kent,  
ME2 4LT, United Kingdom

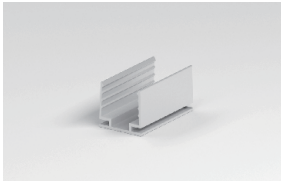


sales@fossled.co.uk  
+44 (0)203 198 1908  
www.fossled.com  
V1-MS260520

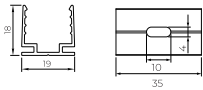


## MOUNTING OPTIONS

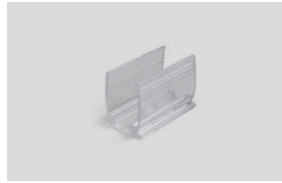
*Lightweight & Durable*  
**MC1617-8** Aluminium Clips



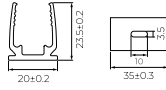
1 Clip supplied with M3 fixing screws  
4 Clips recommended per metre



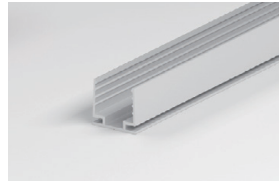
*Discreet & Moisture Proof*  
**MC1617-CL** Transparent Clips



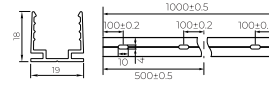
1 Clip supplied with M3 fixing screws  
4 Clips recommended per metre



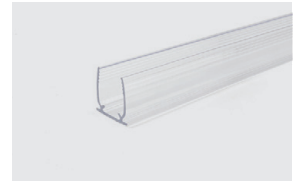
*Lightweight & Durable*  
**MP1617-81M** Aluminium Profile



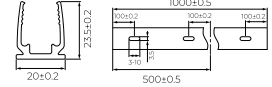
Supplied with M3 fixing screws  
1 metre length



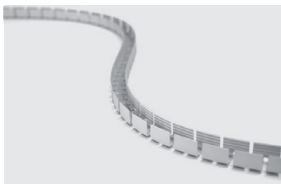
*Discreet & Moisture Proof*  
**MP1617-CL1M** Transparent Plastic Profile



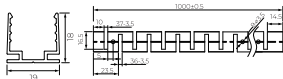
Supplied with M3 fixing screws  
1 metre length



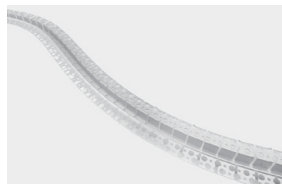
*Adaptive Mounting*  
**FP1617-81M** Flexible Surface Profile



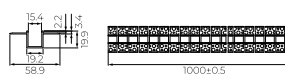
Supplied with M3 fixing screws  
1 metre length



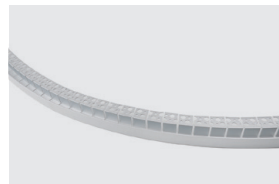
*Adaptive & Flush*  
**PFP1617-81M** Flexible Plaster In



Supplied with M3 fixing screws  
1 metre length



*Edge Integration*  
**SPFP1617-81M** One Sided Flexible Plaster In



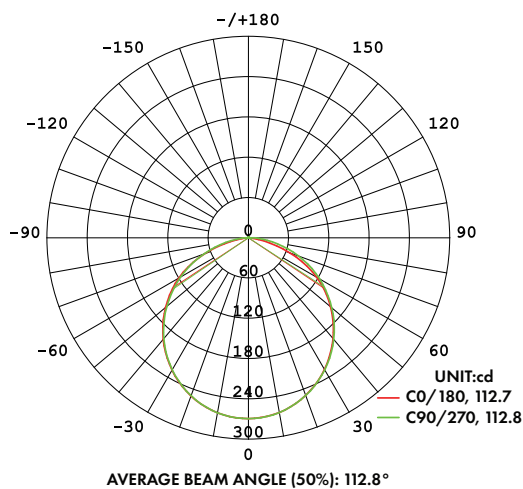
Supplied with M3 fixing screws  
1 metre length



## CABLE OPTIONS

Cable Type	Diagram	Specification	Core	Electrical Properties
White Silicone Cable		Outer Ø6.0mm/Inner cores 3 x 0.5mm <sup>2</sup>		Brown V+, White W, Yellow WW
Black Silicone Cable		Outer Ø6.0mm/Inner cores 3 x 0.5mm <sup>2</sup>		Brown V+, White W, Yellow WW

## LIGHT DISTRIBUTION CURVE



The given data is based on 24V, 15W/M, single colour with 4000k colour temperature.  
If you need IES files for other types please contact our sales department.


# NEON CUSTOMISATION

Follow the steps below, using our Customisation Sheet, to build your custom Neon product

[GO TO CUSTOMISATION SHEET](#) →

**1**

Confirm Nominal Code and select the required colour temperature

Nominal Code	Colour Temperature
<b>NS1617T3</b> -	<b>T</b>
Neon Side Bend 16x17mm Tunable White 11W	 T 2700K-6500K

**2**

Choose the Product Length



**Product Length**  
**71.43mm**

Customised in increments set by the specified product cut points

Please note that the finished length will be effected by Feed/End Type and specified tolerances



**3**

Choose Feed Type options

Feed Type	Feed Cable Length	Feed Cable Colour
<b>FF</b>	<b>1m</b>	<b>FNR3C-0</b>
<ul style="list-style-type: none"> <li>FF Front IP67</li> <li>FB Bottom IP67</li> <li>FL Left Side IP67</li> <li>FR Right Side IP67</li> </ul>	Customised in 1m increments	<ul style="list-style-type: none"> <li> <b>NR3C-0</b> Feed White Silicone Cable</li> <li> <b>NR3C-1</b> Feed Black Silicone Cable</li> </ul>

**4**

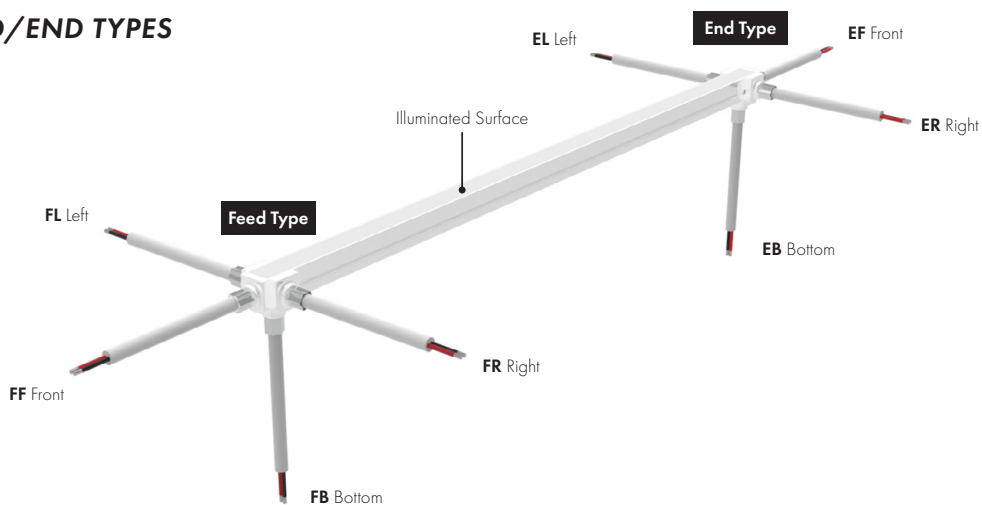
Choose End Type options

End Type	End Cable Length	End Cable Colour
<b>EE</b>	<b>-</b>	<b>-</b>
<ul style="list-style-type: none"> <li>EE End IP67</li> <li>EES End Silicone Cap IP65</li> <li>EF Front IP67</li> <li>EB Bottom IP67</li> <li>EL Left Side IP67</li> <li>ER Right Side IP67</li> </ul>	Customised in 1m increments	<ul style="list-style-type: none"> <li> <b>NR3C-0</b> End White Silicone Cable</li> <li> <b>NR3C-1</b> End Black Silicone Cable</li> </ul>

**+**

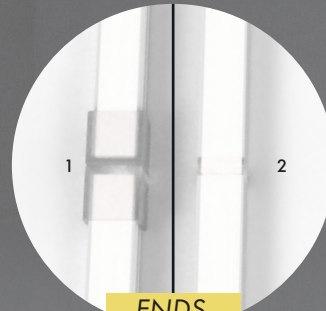
Add required Mounting options  
If additional Joined Lengths are required then repeat steps 3 and 4

## DEFINING FEED/END TYPES



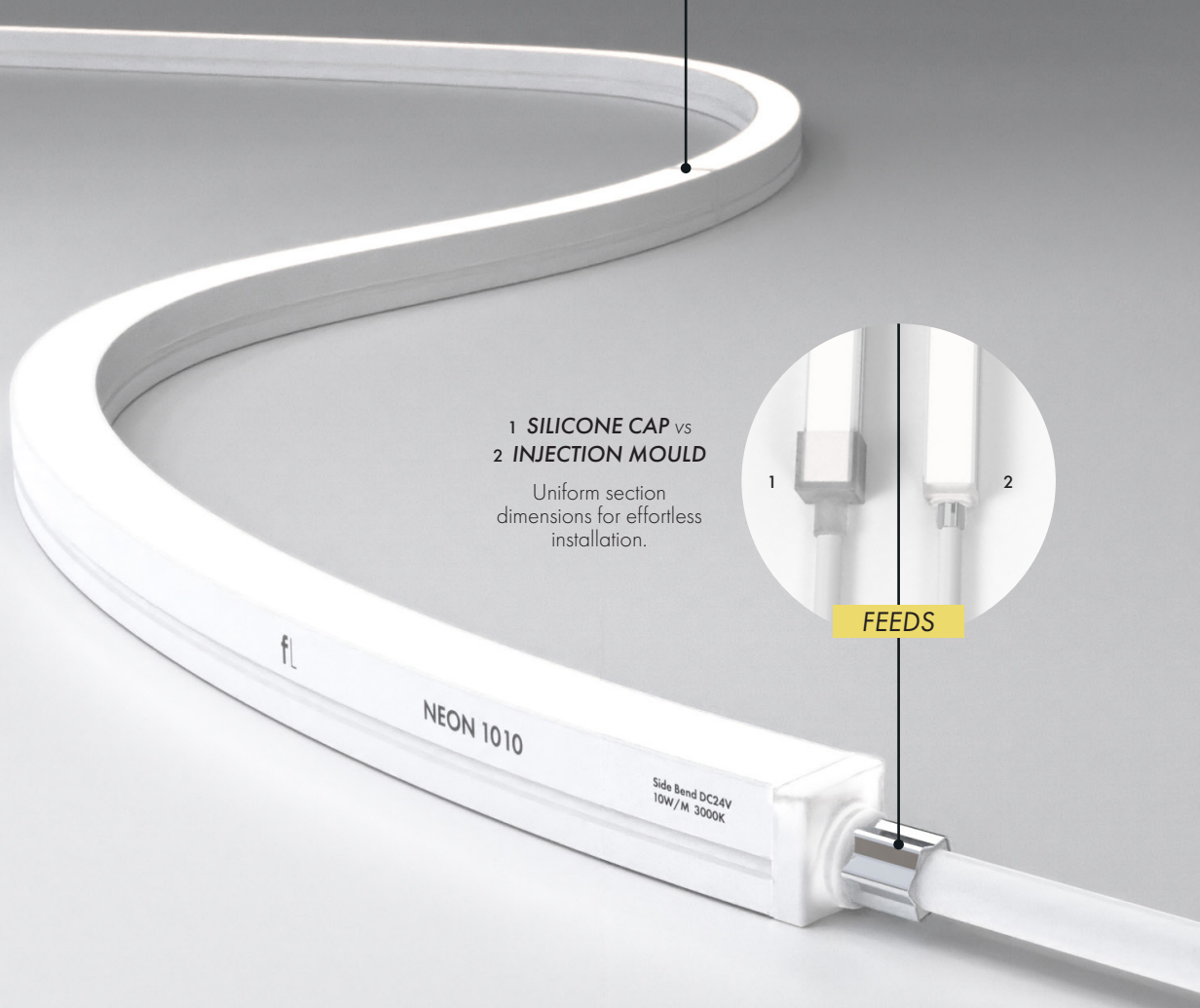
# INJECTION MOULDS

Our injection moulded ends provide a seamless, waterproof, and ultra-durable solution for a superior lighting solution. Whether for architectural, commercial, or outdoor lighting applications, our factory-sealed ends ensure flawless performance, easy installation, and a professional finish—*expertly manufactured at our UK factory.*



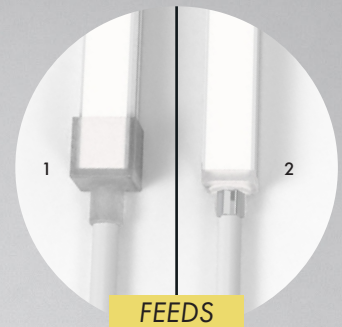
- 1 SILICONE CAP vs
- 2 INJECTION MOULD

Create a seamless finish at the end of runs and when butting two lengths together.



- 1 SILICONE CAP vs
- 2 INJECTION MOULD

Uniform section dimensions for effortless installation.



## DURABILITY & PROTECTION

Injection moulded entries ensure a robust seal, preventing water ingress, dust contamination, and moisture via capillary action for long lasting protection.

## AESTHETICS & FINISH

Injection moulded entries provide a seamless, professional finish, avoiding visible seams guaranteeing a consistent appearance across all installations.

## EFFORTLESS INSTALLATION

With uniform section dimensions and no bulky connectors or uneven fittings, injection moulded ends make installation smooth, clean, and hassle-free.