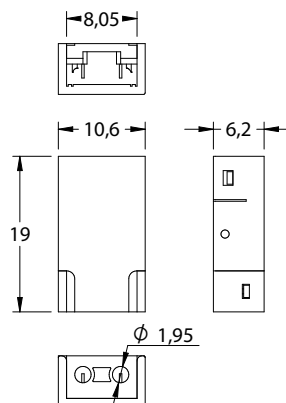


STRIP to WIRE CONNECTOR

8mm Single Colour Solderless Straight Connector



Streamline your installation with our Strip to Wire Connectors. No soldering required. Designed for seamless compatibility with fossLED 8 mm Single Colour ECO, LINEAR and FREE CUT strips, these connectors provide a fast, professional finish.

Simply insert the LED strip and cable into the terminals and clamp with pliers for a reliable, long-lasting connection.

Full installation guide available on page 2.

PRODUCT SPECIFICATION

Voltage range:	DC 3-24 V
Max current of pin:	5.5A (132W Max in 24 V DC)
Wire accepted:	2 x 0.52mm ² /20AWG
Dimensions:	L19*W10.6*H6.2mm
Environment temperature:	-10 to +45°C
Product reference:	FLSW8SN

COMPATIBLE PRODUCTS (sold separately)

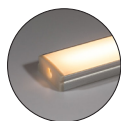


Cable

Product reference: **2C50-5M**

Cable gauge: 2 x 0.52mm²/20AWG (red/black)

Cable length: 5m feed cable (cut to required length)



Profiles

Compatible with the full fossLED aluminium profile range



LED Strip

Compatible series (IP20): ECO, LINEAR and FREE CUT

Strip type: SMD and COB (8 mm PCB)

STRIP to WIRE CONNECTOR

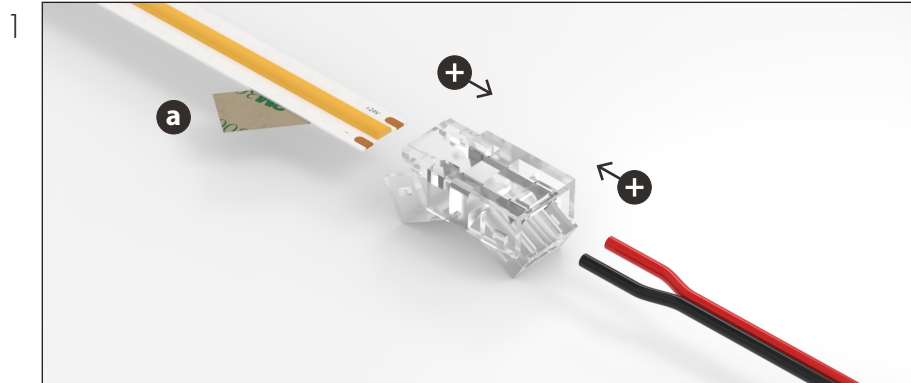
8mm Single Colour Solderless Straight Connector



USING A STRIP to WIRE CONNECTOR

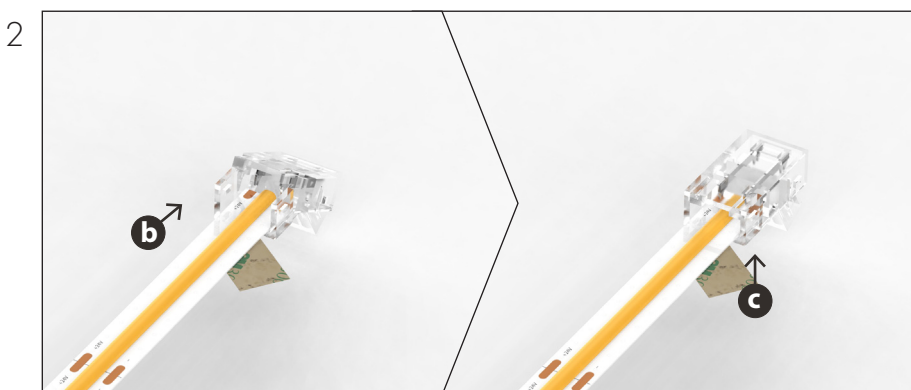
Follow the steps below, repeating the process for each connector.

Important: Always ensure power is disconnected before making any connections.



a Peel back the adhesive tape to expose enough bare strip for insertion into the connector. Ensure both the tape and adhesive layer are peeled back. These can be re-applied once the connection is complete.

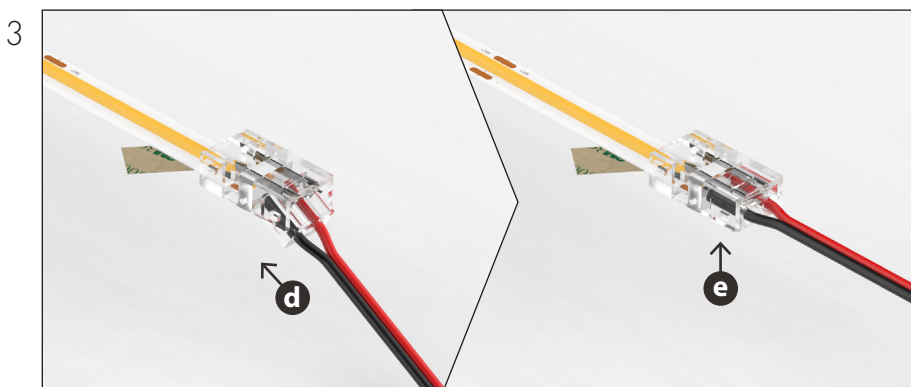
+ Align the LED strip and cable, ensuring the polarities are correct.



b Insert the LED strip fully into the hinged housing lid. Ensure the connector contacts are aligned with the strip's copper pads.

c Using pliers, evenly clamp down the lid to pierce the LED strip PCB. The lid will click into place, confirming the connection is secure.

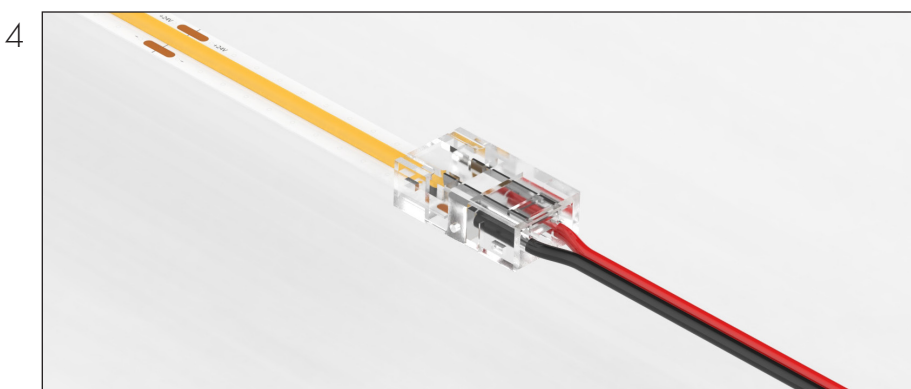
Note: Take care when crimping to avoid cracking the outer housing.



d Fully insert the cable into the hinged housing lid. The outer cable sheath does not need to be stripped.

e Evenly clamp down the lid with pliers to pierce the cable. The lid will click into place, confirming the connection is secure.

Note: Take care when crimping to avoid cracking the outer housing.



Ensure both the LED strip and cable are locked in place and the connection is secure. Re-apply the adhesive tape beneath the connector, ready for installation.

Note: Test the LED strip to confirm correct operation before final installation.

Note: Images are for illustration purposes only and may not represent the exact connector model supplied.