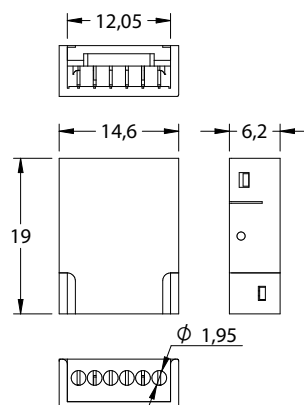
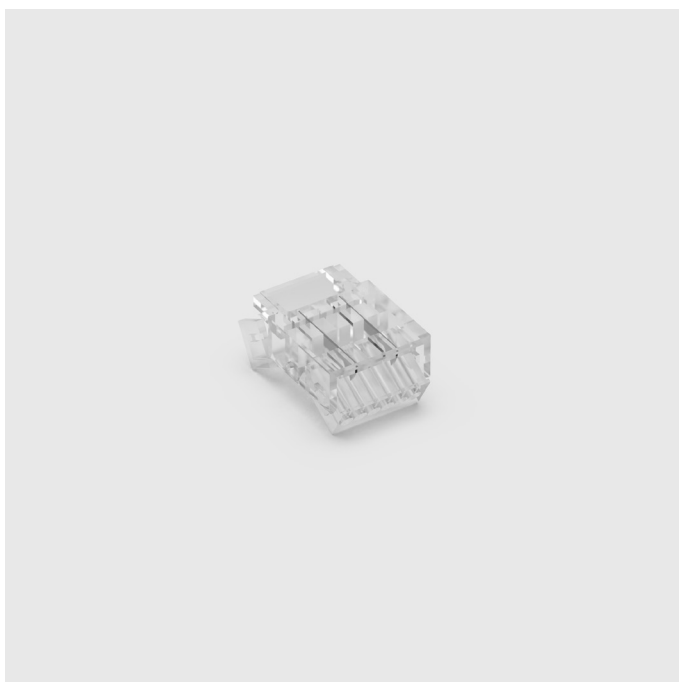


# STRIP to WIRE CONNECTOR

12mm Single Colour Solderless Straight Connector



Streamline your installation with our Strip to Wire Connectors. No soldering required. Designed for seamless compatibility with fossLED 12 mm Single Colour ECO strips, these connectors provide a fast, professional finish.

Simply insert the LED strip and cable into the terminals and clamp with pliers for a reliable, long-lasting connection.

**Full installation guide available on page 2.**

## PRODUCT SPECIFICATION

Voltage range:	DC 3-24 V
Max current of pin:	5.5A (132W Max in 24 V DC)
Wire accepted:	2 x 0.52mm <sup>2</sup> /20AWG
Dimensions:	L19*W14.6*H6.2mm
Environment temperature:	-10 to +45°C
Product reference:	<b>FLSW12SN</b>

## COMPATIBLE PRODUCTS (sold separately)

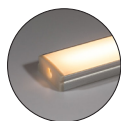


Cable

Product reference: **2C50-5M**

Cable gauge: 2 x 0.52mm<sup>2</sup>/20AWG (red/black)

Cable length: 5m feed cable (cut to required length)



Profiles

Compatible with the full fossLED aluminium profile range\*

\*Excludes PRO1(R), PRO2(R) and PRO6R



LED Strip

Compatible series (IP20): ECO

Strip type: SMD and COB (12 mm PCB)

# STRIP to WIRE CONNECTOR

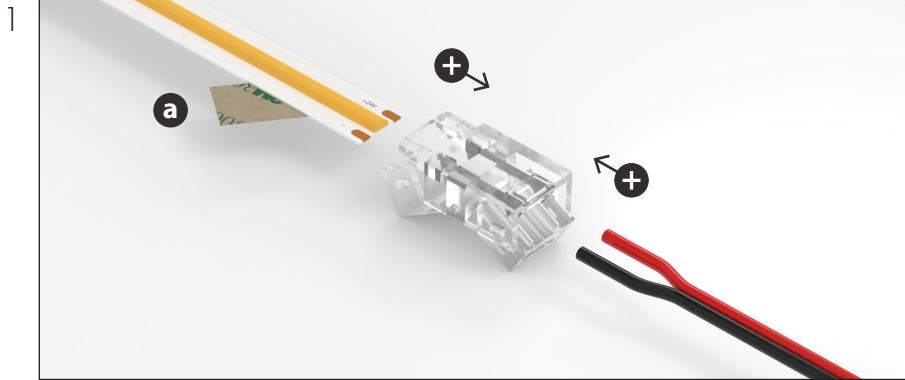
12mm Single Colour Solderless Straight Connector



## USING A STRIP to WIRE CONNECTOR

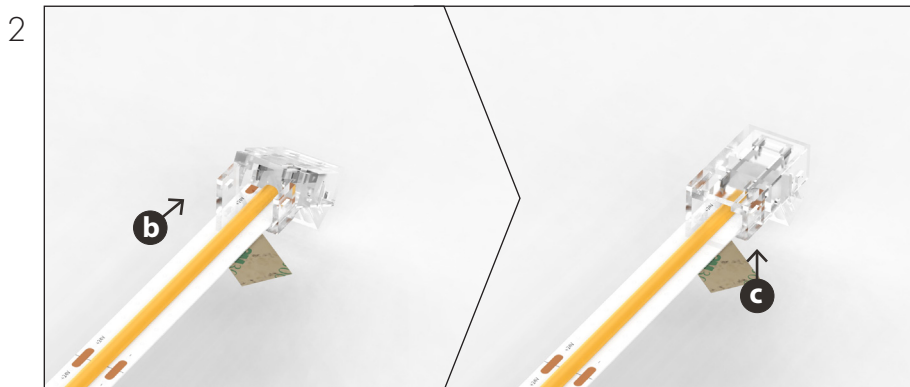
Follow the steps below, repeating the process for each connector.

*Important: Always ensure power is disconnected before making any connections.*



**a** Peel back the adhesive tape to expose enough bare strip for insertion into the connector. Ensure both the tape and adhesive layer are peeled back. These can be re-applied once the connection is complete.

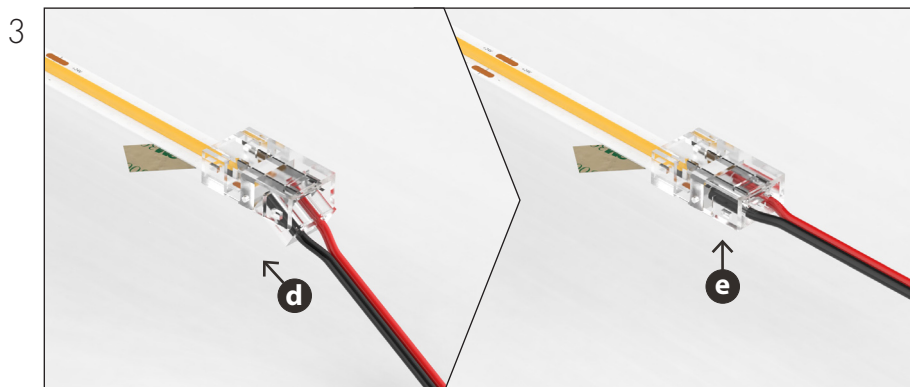
**+** Align the LED strip and cable, ensuring the polarities are correct.



**b** Insert the LED strip fully into the hinged housing lid. Ensure the connector contacts are aligned with the strip's copper pads.

**c** Using pliers, evenly clamp down the lid to pierce the LED strip PCB. The lid will click into place, confirming the connection is secure.

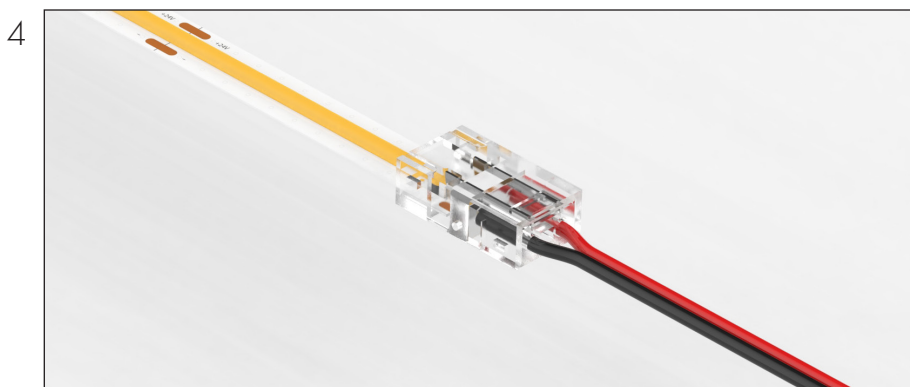
*Note: Take care when crimping to avoid cracking the outer housing.*



**d** Fully insert the cable into the hinged housing lid. The outer cable sheath does not need to be stripped.

**e** Evenly clamp down the lid with pliers to pierce the cable. The lid will click into place, confirming the connection is secure.

*Note: Take care when crimping to avoid cracking the outer housing.*



Ensure both the LED strip and cable are locked in place and the connection is secure. Re-apply the adhesive tape beneath the connector, ready for installation.

*Note: Test the LED strip to confirm correct operation before final installation.*

*Note: Images are for illustration purposes only and may not represent the exact connector model supplied.*