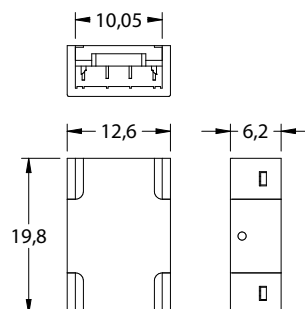


STRIP to STRIP CONNECTOR

10mm RGB Solderless Straight Connector



IP20

DC
24V

5
EXT

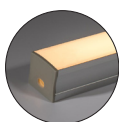
Streamline your installation with our Strip to Strip Connectors. No soldering required. Designed for seamless compatibility with fossLED 10 mm RGB ECO strips, these connectors provide a fast, professional finish.

Simply insert both LED strips into the terminals and clamp with pliers to pierce the PCB for a reliable, long-lasting connection.
Full installation guide available on page 2.

PRODUCT SPECIFICATION

| | |
|--------------------------|----------------------------|
| Voltage range: | DC 3-24 V |
| Max current of pin: | 5.5A (132W Max in 24 V DC) |
| Dimensions: | L19.8*W12.6*H6.2mm |
| Environment temperature: | -10 to +45°C |
| Product reference: | FLSS10RN |

COMPATIBLE PRODUCTS (sold separately)



Profiles

Compatible with the full fossLED aluminium profile range*
*Excludes PRO1(R), PRO2(R) and PRO6R



LED Strip

Compatible series (IP20): ECO
Strip type: SMD (10 mm PCB)

STRIP to STRIP CONNECTOR

10mm RGB Solderless Straight Connector

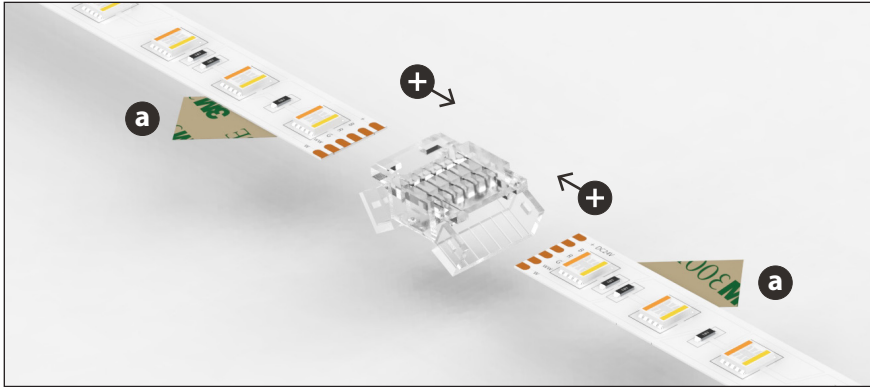


USING A STRIP to STRIP CONNECTOR

Follow the steps below, repeating the process for each connector.

Important: Always ensure power is disconnected before making any connections.

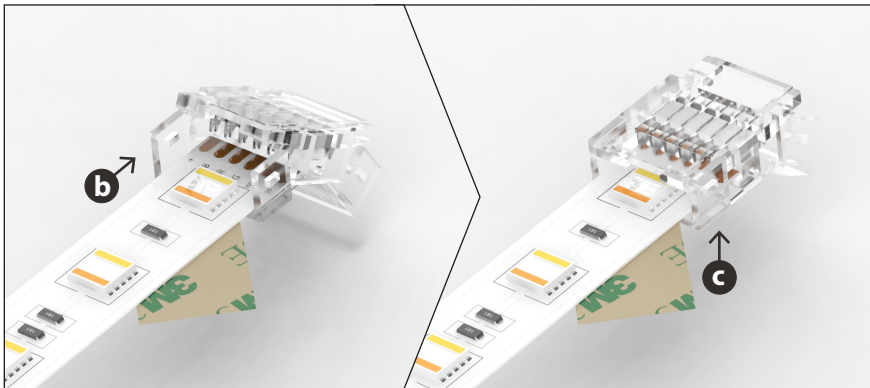
1



a Peel back the adhesive tape to expose enough bare strip for insertion into the connector. Ensure both the tape and adhesive layer are peeled back. These can be re-applied once the connection is complete.

+ Align the LED strips, ensuring the polarities match.

2

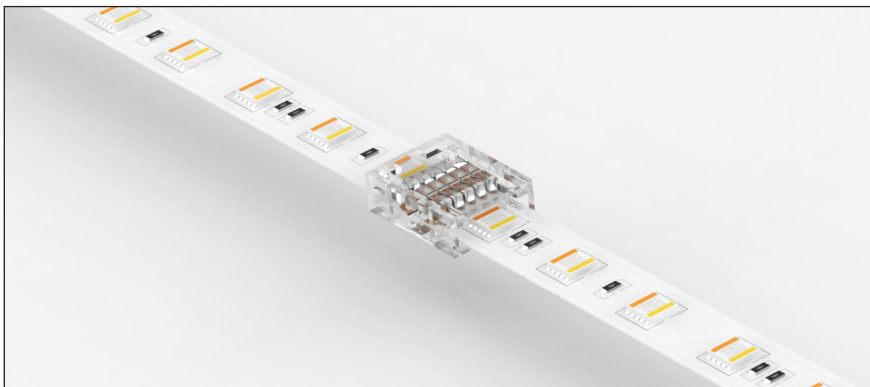


b Insert the LED strip fully into the hinged housing lid. Ensure the connector contacts are aligned with the strip's copper pads.

c Using pliers, evenly clamp down the lid to pierce the LED strip PCB. The lid will click into place, confirming the connection is secure.

Note: Take care when crimping to avoid cracking the outer housing.

3



Repeat steps **b** **c** on the opposite side of the connector, double-checking polarity alignment.

Ensure both LED strips are locked in place and the connection is secure. Re-apply the adhesive tape beneath the connector, ready for installation.

Note: Test the LED strip to confirm correct operation before final installation.

Note: Images are for illustration purposes only and may not represent the exact connector model supplied.