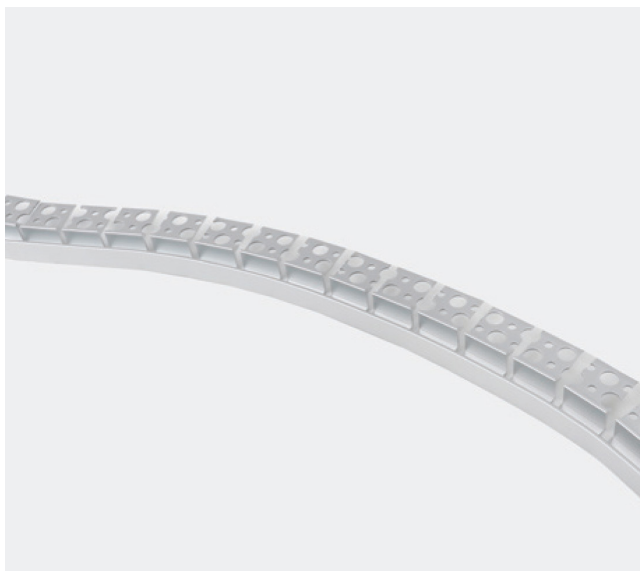


FLEXIBLE PLASTER IN

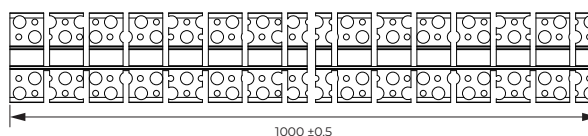
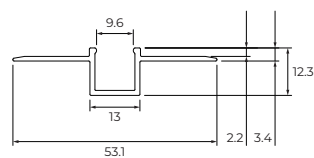
NEON 1010 - ALUMINIUM



EDGE INTEGRATION



DIMENSIONS [mm]



DESCRIPTION

Our one sided flexible plaster in profiles are designed to provide an adaptive and flush edge installation. Each profile is made from aluminium and includes fixing screws.

PRODUCT SPECIFICATION

| | |
|---------------------|----------------------------------|
| Dimensions | L: 1000mm, W: 53.1 mm, H: 12.3mm |
| Material | Aluminium |
| Fixing Type | M3x16 fixing screws |
| Compatible Series | NEON 1010 |
| Minimum Bend Radius | ≥200mm |
| Certifications | UL, CE, RoHS |
| Product Code | SPFP1010-81M |