

LINEAR 10W TUNEABLE WHITE TOP BEND

NEON 1010

IP67

Single
Binning

LM
80

CRI
92+

5
Year

TM66
ASSESSED

Flame
Resistant

IK10

Saltwater
Resistant

UV
Protection

Solvent
Resistant

Dust Proof

DESCRIPTION

Our Tuneable White Top Bend LED NEON FLEX 1010 is crafted from Dow Chemical SILASTIC™ ET-7021 silicone rubber, offering exceptional transparency and strength. Manufactured using an integrated extrusion moulding process with environmental protection grade silicone, this product features a unique optical light distribution design for a uniform, shadow-free lighting surface. We use a matt finish that is anti-dust and more robust against UV exposure, ensuring long-lasting performance and maintaining a clean, high-quality appearance over time.

PRODUCT SPECIFICATION

Product Code	NT1010T3
Dimensions	W: 10mm, H: 10mm
Cutting Interval	50mm
Bend Direction	Top Bend
Minimum Bend Radius	≥75mm
Colour Temperature ¹	2700K-6500K, Tuneable White
Bin/step	Single Bin
Lifetime	≥50,000 hours
Environment Ta	-25°C to 55°C
IP Rating	IP67
Mounting ²	Clips and Profile
Connection ¹	Injection Moulds
Certifications	UL, CE, RoHS

PERFORMANCE DATA

Power Consumption	10W/m
Supply Voltage	24V DC
Lumens/Metre ¹	400-800 Lm/m
Lumen Efficiency ¹	40-80 Lm/m
L70	63,000 hours
L80	40,000 hours
Max Length	6,000mm
Beam Angle	120°
CRI	92+
Dimmable	Yes

¹ See Page 2 for further information.

² See Page 3 for further information.



UK BESPOKE MACHINE INJECTION MOULDING

Our factory-sealed ends ensure an ultra durable, waterproof and seamless installation

FIND OUT MORE




fossLED UK Operations Centre
Unit C9 & C10 Lakeside, Neptune Close,
Medway City Estate, Rochester, Kent,
ME2 4LT, United Kingdom



sales@fossled.co.uk
+44 (0)203 198 1908
www.fossled.com
V1-MS250703

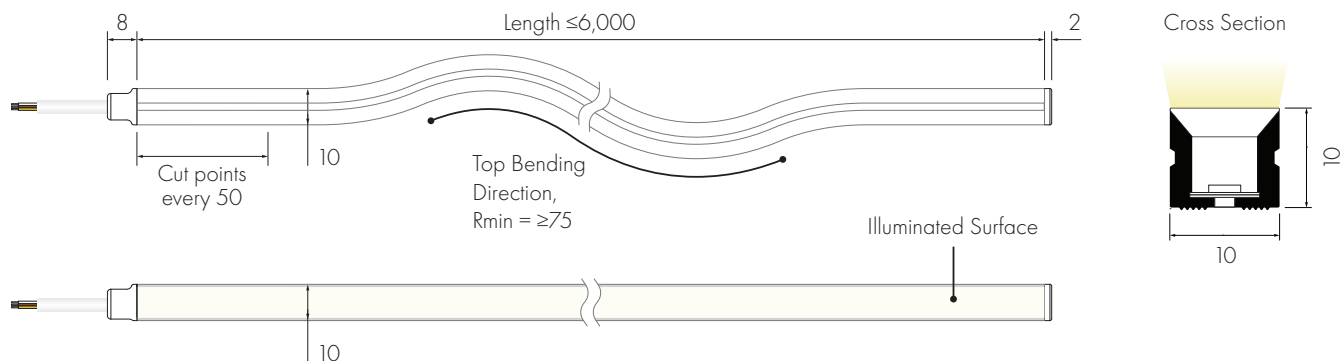


TUNEABLE WHITE TEMPERATURE DATA

CCT (K)	CRI	Voltage	Power (W/m)	Lumen (lm/m)	Efficiency (lm/W)	Unit Length (mm)	Max. Run Length (M)
 2700K-6500K	92+	DC24V	10	400-800	40-80	50	6

The given data are typical values due to the tolerances of the production process and the electrical components, values for light output and electrical power can vary up to 10%.

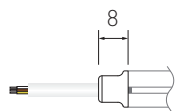
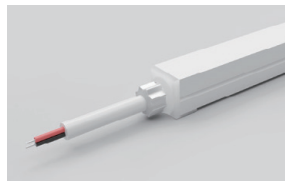
DIMENSIONS [mm]



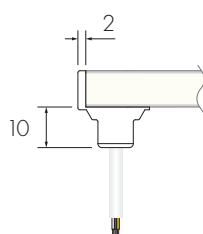
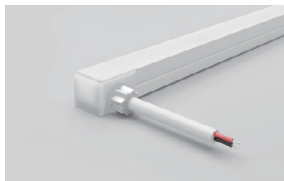
Shown with **FF** Front Feed and **EE** End Injection Moulds

CABLE FEED/END TYPES

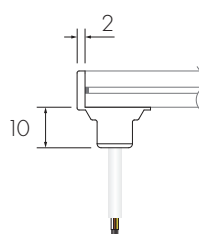
FF/EF Front Injection Mould



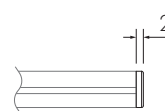
FL/FR/EL/ER Side Injection Mould



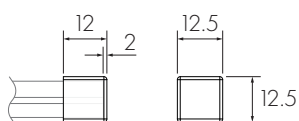
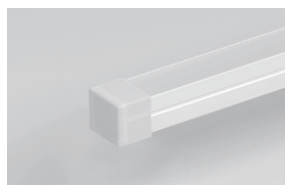
FB/EB Bottom Injection Mould



EE End Injection Mould



EES End Silicone Cap



fossLED UK Operations Centre
Unit C9 & C10 Lakeside, Neptune Close,
Medway City Estate, Rochester, Kent,
ME2 4LT, United Kingdom

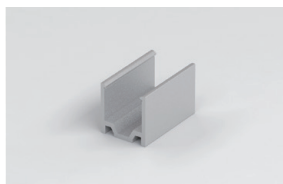


sales@fossled.co.uk
+44 (0)203 198 1908
www.fossled.com
V1-MS250703

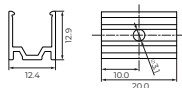


MOUNTING OPTIONS

Lightweight & Durable
MC1010-8 Aluminium Clips



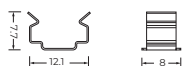
1 Clip supplied with M3 fixing screws
4 Clips recommended per metre



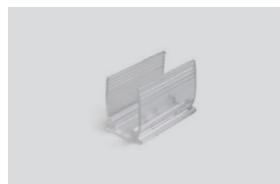
Robust & Long-lasting
MC1010-SS Stainless Steel Clips



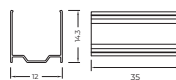
1 Clip supplied with M3 fixing screws
4 Clips recommended per metre



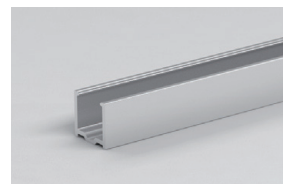
Discreet & Moisture Proof
MC1010-CL Transparent Clips



1 Clip supplied with M3 fixing screws
4 Clips recommended per metre



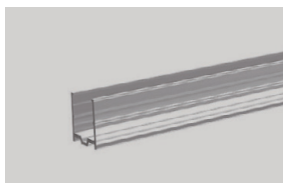
Lightweight & Durable
MP1010-81M Aluminium Profile



Supplied with M3 fixing screws
1 metre length



Discreet & Moisture Proof
MP1010-CL1M Transparent Plastic Profile



Supplied with M3 fixing screws
1 metre length



Adaptive Mounting
FP1010-81M Flexible Surface Profile



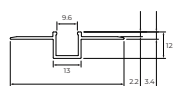
Supplied with M3 fixing screws
1 metre length



Adaptive & Flush
PFP1010-81M Flexible Plaster In



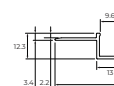
Supplied with M3 fixing screws
1 metre length



Edge Integration
SPFP1010-81M One Sided Flexible Plaster In



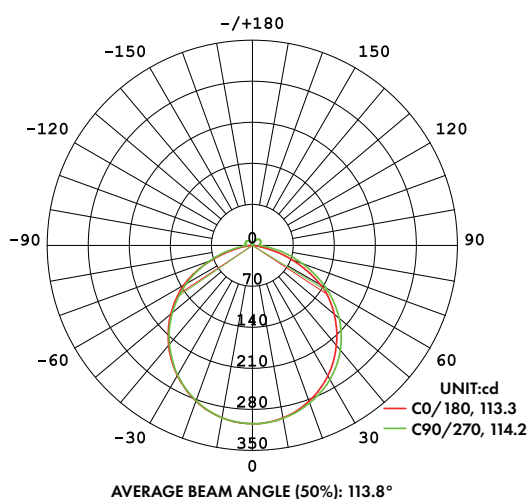
Supplied with M3 fixing screws
1 metre length



CABLE OPTIONS

Cable Type	Diagram	Specification	Core	Electrical Properties
White Silicone Cable		Outer Ø6.0mm/Inner cores 3 x 0.5mm ²		Brown V+, White V-, Yellow WW

LIGHT DISTRIBUTION CURVE



The given data is based on 24V, 10W/M, single colour with 4000k colour temperature.
If you need IES files for other types please contact our sales department.

fossLED UK Operations Centre
Unit C9 & C10 Lakeside, Neptune Close,
Medway City Estate, Rochester, Kent,
ME2 4LT, United Kingdom



sales@fossled.co.uk
+44 (0)203 198 1908
www.fossled.com
V1-MS250703



NEON CUSTOMISATION

Follow the steps below, using our Customisation Sheet, to build your custom Neon product

[GO TO CUSTOMISATION SHEET](#) →

1

Confirm Nominal Code and select the required colour temperature

Nominal Code

NT1010T3 -

Colour Temperature

T

Neon Top Bend 10x10mm
Tunable White 10W



T 2700K-6500K

2

Choose the Product Length

Product Length

50mm

Customised in increments set by the specified product cut points

Please note that the finished length will be effected by Feed/End Type and specified tolerances

3

Choose Feed Type options

Feed Type

FF

Feed Cable Length

1m

Feed Cable Colour

FNR3C-0

FF Front IP67

FB Bottom IP67

FL Left Side IP67

FR Right Side IP67

Customised in 1m increments



FNR3C-0 Feed White Silicone Cable

4

Choose End Type options

End Type

EE

End Cable Length

-

End Cable Colour

-

EE End IP67

EES End Silicone Cap IP67

EF Front IP67

EB Bottom IP67

EL Left Side IP67

ER Right Side IP67

Customised in 1m increments



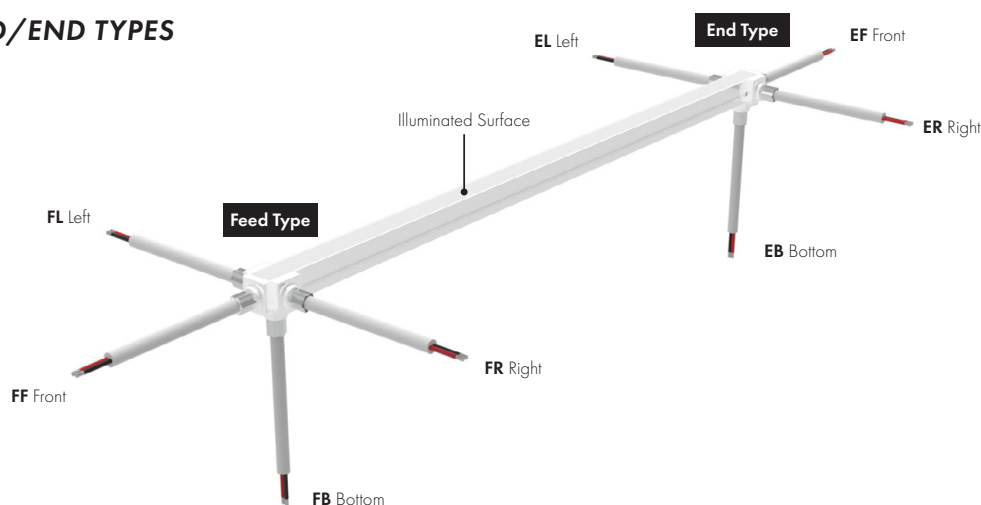
ENR3C-0 End White Silicone Cable

+

Add required Mounting options

If additional Joined Lengths are required then repeat steps 3 and 4

DEFINING FEED/END TYPES



fossLED UK Operations Centre
Unit C9 & C10 Lakeside, Neptune Close,
Medway City Estate, Rochester, Kent,
ME2 4LT, United Kingdom

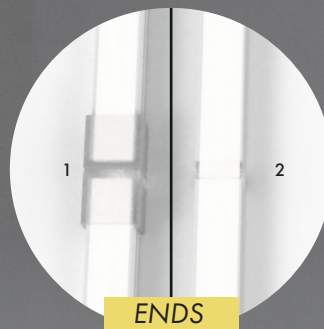


sales@fossled.co.uk
+44 (0)203 198 1908
www.fossled.com
V1-MS250703



INJECTION MOULDS

Our injection moulded ends provide a seamless, waterproof, and ultra-durable solution for a superior lighting solution. Whether for architectural, commercial, or outdoor lighting applications, our factory-sealed ends ensure flawless performance, easy installation, and a professional finish—*expertly manufactured at our UK factory.*



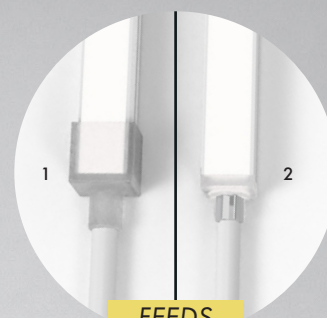
- 1 SILICONE CAP vs
2 INJECTION MOULD

Create a seamless finish at the end of runs and when butting two lengths together.

ENDS

- 1 SILICONE CAP vs
2 INJECTION MOULD

Uniform section dimensions for effortless installation.



FEEDS

DURABILITY & PROTECTION

Injection moulded entries ensure a robust seal, preventing water ingress, dust contamination, and moisture via capillary action for long lasting protection.

AESTHETICS & FINISH

Injection moulded entries provide a seamless, professional finish, avoiding visible seams guaranteeing a consistent appearance across all installations.

EFFORTLESS INSTALLATION

With uniform section dimensions and no bulky connectors or uneven fittings, injection moulded ends make installation smooth, clean, and hassle-free.

fossLED UK Operations Centre
Unit C9 & C10 Lakeside, Neptune Close,
Medway City Estate, Rochester, Kent,
ME2 4LT, United Kingdom



sales@fossled.co.uk
+44 (0)203 198 1908
www.fossled.com
V1-MS250703

