

LINEAR 10W SINGLE COLOUR TOP BEND

# NEON 1010

IP67

Single  
Binning

LM  
80

CRI  
92+

5  
Year

TM66  
ASSESSED

Flame  
Resistant

IK10

Saltwater  
Resistant

UV  
Protection

Solvent  
Resistant

Dust Proof

## DESCRIPTION

Our Single Colour Top Bend LED NEON FLEX 1010 is crafted from Dow Chemical SILASTIC™ ET-7021 silicone rubber, offering exceptional transparency and strength. Manufactured using an integrated extrusion moulding process with environmental protection grade silicone, this product features a unique optical light distribution design for a uniform, shadow-free lighting surface. We use a matt finish that is anti-dust and more robust against UV exposure, ensuring long-lasting performance and maintaining a clean, high-quality appearance over time.

## PRODUCT SPECIFICATION

Product Code	NT1010S3
Dimensions	W: 10mm, H: 10mm
Cutting Interval	50mm
Bend Direction	Top Bend
Minimum Bend Radius	≥75mm
Colour Temperature <sup>1</sup>	2700K, 3000K, 4000K, + More
Bin/step	Single Bin / 3SDCM
Lifetime	≥50,000 hours
Environment Ta	-25°C to 55°C
IP Rating	IP67
Mounting <sup>2</sup>	Clips and Profile
Connection <sup>1</sup>	Injection Moulds
Certifications	UL, CE, RoHS

## PERFORMANCE DATA

Power Consumption	10W/m
Supply Voltage	24V DC
Lumens/Metre <sup>1</sup>	831-885 Lm/m
Lumen Efficiency <sup>1</sup>	83.1-88.5 Lm/m
L70	161,000 hours
L80	102,000 hours
Max Length	7,000mm
Beam Angle	120°
CRI	92+
Dimmable	Yes

<sup>1</sup> See Page 2 for further information. More custom colour temperatures are available upon request.

<sup>2</sup> See Page 3 for further information.



UK BESPOKE MACHINE INJECTION MOULDING

Our factory-sealed ends ensure an ultra durable, waterproof and seamless installation

FIND OUT MORE



fossLED UK Operations Centre  
Unit C9 & C10 Lakeside, Neptune Close,  
Medway City Estate, Rochester, Kent,  
ME2 4LT, United Kingdom



sales@fossled.co.uk  
+44 (0)203 198 1908  
www.fossled.com  
V1-MS250703

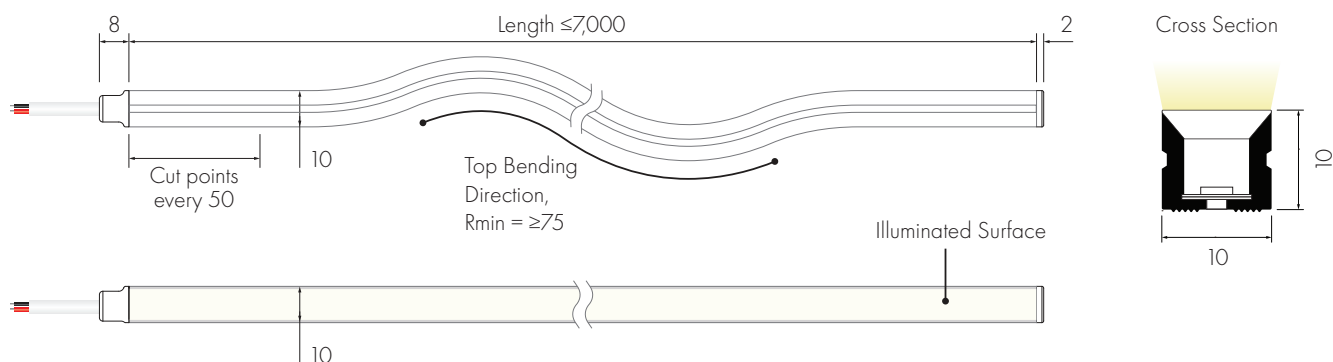


## SINGLE COLOUR TEMPERATURE DATA

CCT (K)	CRI	Voltage	Power (W/m)	Lumen (Lm/m)	Efficiency (Lm/W)	Unit Length (mm)	Max. Run Length (M)
2700K	92+	DC24V	10	831	83.1	50	7
3000K	92+	DC24V	10	868	86.8	50	7
4000K	92+	DC24V	10	885	88.5	50	7

The given data are typical values due to the tolerances of the production process and the electrical components, values for light output and electrical power can vary up to 10%.

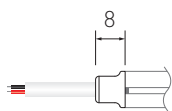
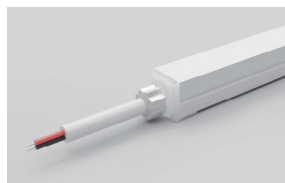
## DIMENSIONS [mm]



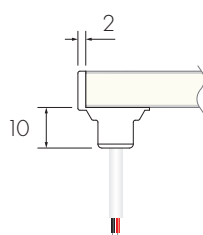
Shown with **FF** Front Feed and **EE** End Injection Moulds

## CABLE FEED/END TYPES

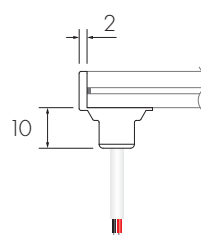
**FF/EF** Front Injection Mould



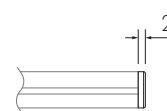
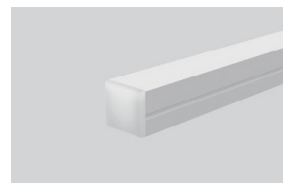
**FL/FR/EL/ER** Side Injection Mould



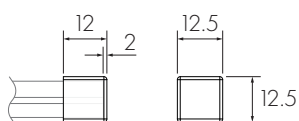
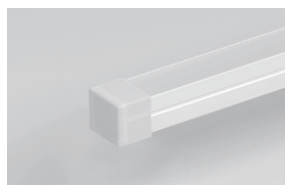
**FB/EB** Bottom Injection Mould



**EE** End Injection Mould

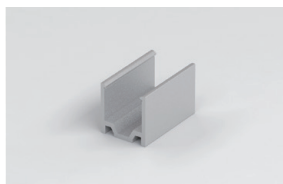


**EES** End Silicone Cap

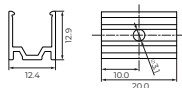


## MOUNTING OPTIONS

*Lightweight & Durable*  
**MC1010-8** Aluminium Clips



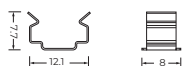
1 Clip supplied with M3 fixing screws  
4 Clips recommended per metre



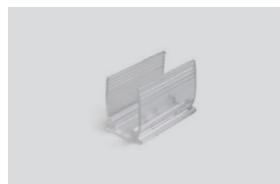
*Robust & Long-lasting*  
**MC1010-SS** Stainless Steel Clips



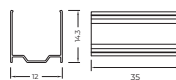
1 Clip supplied with M3 fixing screws  
4 Clips recommended per metre



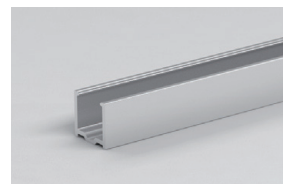
*Discreet & Moisture Proof*  
**MC1010-CL** Transparent Clips



1 Clip supplied with M3 fixing screws  
4 Clips recommended per metre



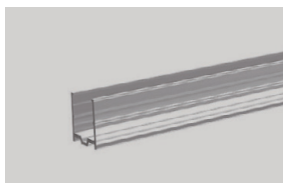
*Lightweight & Durable*  
**MP1010-81M** Aluminium Profile



Supplied with M3 fixing screws  
1 metre length



*Discreet & Moisture Proof*  
**MP1010-CL1M** Transparent Plastic Profile



Supplied with M3 fixing screws  
1 metre length



*Adaptive Mounting*  
**FP1010-81M** Flexible Surface Profile



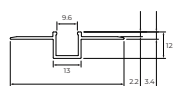
Supplied with M3 fixing screws  
1 metre length



*Adaptive & Flush*  
**PFP1010-81M** Flexible Plaster In



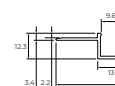
Supplied with M3 fixing screws  
1 metre length



*Edge Integration*  
**SPFP1010-81M** One Sided Flexible Plaster In



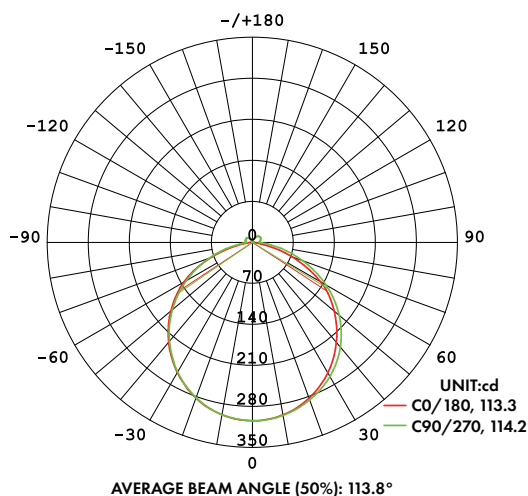
Supplied with M3 fixing screws  
1 metre length



## CABLE OPTIONS

Cable Type	Diagram	Specification	Core	Electrical Properties
White Silicone Cable		Outer Ø6.0mm/Inner cores 2 x 0.5mm <sup>2</sup>		Red V+, Black V-
Black Silicone Cable		Outer Ø6.0mm/Inner cores 2 x 0.5mm <sup>2</sup>		Red V+, Black V-

## LIGHT DISTRIBUTION CURVE



The given data is based on 24V, 10W/M, single colour with 4000k colour temperature.  
If you need IES files for other types please contact our sales department.

**fossLED UK Operations Centre**  
Unit C9 & C10 Lakeside, Neptune Close,  
Medway City Estate, Rochester, Kent,  
ME2 4LT, United Kingdom



**sales@fossled.co.uk**  
+44 (0)203 198 1908  
www.fossled.com  
V1-MS250703



## NEON CUSTOMISATION

Follow the steps below, using our Customisation Sheet, to build your custom Neon product

[GO TO CUSTOMISATION SHEET](#) →

1

Confirm Nominal Code and select the required colour temperature

Nominal Code

**NT1010S3 -**

Neon Top Bend 10x10mm  
Single Colour 10W

Colour Temperature

**G**

- **G** 2700K
- **C** 3000K
- **N** 4000K + More colour temperatures are available upon request

2

Choose the Product Length

Product Length

**50mm**

Customised in increments set by the specified product cut points

Please note that the finished length will be effected by Feed/End Type and specified tolerances

3

Choose Feed Type options

Feed Type

**FF**

- FF** Front IP67
- FB** Bottom IP67
- FL** Left Side IP67
- FR** Right Side IP67

Feed Cable Length

**1m**

Customised in 1m increments

Feed Cable Colour

**FNR2C-0**

- **FNR2C-0** Feed White Silicone Cable
- **FNR2C-1** Feed Black Silicone Cable

4

Choose End Type options

End Type

**EE**

- EE** End IP67
- EES** End Silicone Cap IP67
- EF** Front IP67
- EB** Bottom IP67
- EL** Left Side IP67
- ER** Right Side IP67

End Cable Length

**-**

Customised in 1m increments

End Cable Colour

**-**

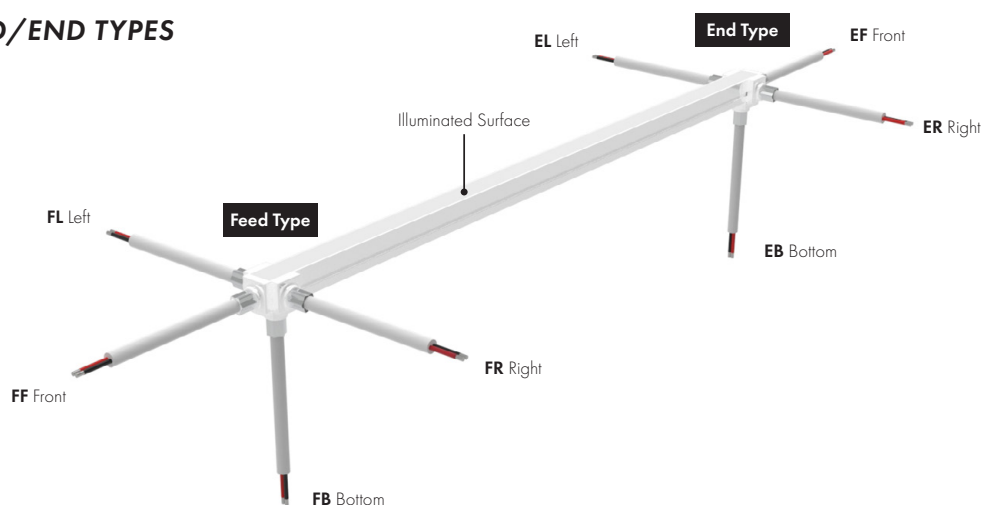
- **ENR2C-0** End White Silicone Cable
- **ENR2C-1** End Black Silicone Cable

+

Add required Mounting options

If additional Joined Lengths are required then repeat steps 3 and 4

## DEFINING FEED/END TYPES



fossLED UK Operations Centre  
Unit C9 & C10 Lakeside, Neptune Close,  
Medway City Estate, Rochester, Kent,  
ME2 4LT, United Kingdom

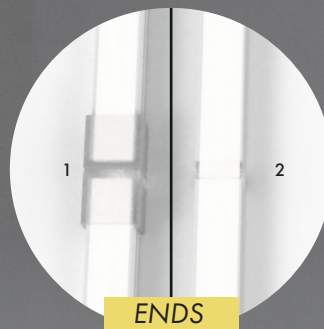


sales@fossled.co.uk  
+44 (0)203 198 1908  
www.fossled.com  
V1-MS250703



# INJECTION MOULDS

Our injection moulded ends provide a seamless, waterproof, and ultra-durable solution for a superior lighting solution. Whether for architectural, commercial, or outdoor lighting applications, our factory-sealed ends ensure flawless performance, easy installation, and a professional finish—*expertly manufactured at our UK factory.*



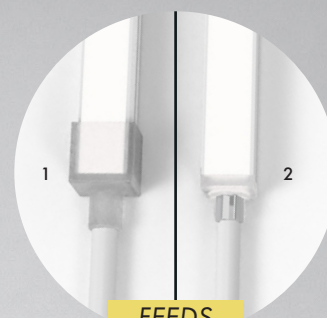
- 1 SILICONE CAP vs  
2 INJECTION MOULD

Create a seamless finish at the end of runs and when butting two lengths together.

ENDS

- 1 SILICONE CAP vs  
2 INJECTION MOULD

Uniform section dimensions for effortless installation.



FEEDS

## DURABILITY & PROTECTION

Injection moulded entries ensure a robust seal, preventing water ingress, dust contamination, and moisture via capillary action for long lasting protection.

## AESTHETICS & FINISH

Injection moulded entries provide a seamless, professional finish, avoiding visible seams guaranteeing a consistent appearance across all installations.

## EFFORTLESS INSTALLATION

With uniform section dimensions and no bulky connectors or uneven fittings, injection moulded ends make installation smooth, clean, and hassle-free.

**fossLED UK Operations Centre**  
Unit C9 & C10 Lakeside, Neptune Close,  
Medway City Estate, Rochester, Kent,  
ME2 4LT, United Kingdom



**sales@fossled.co.uk**  
+44 (0)203 198 1908  
www.fossled.com  
V1-MS250703

