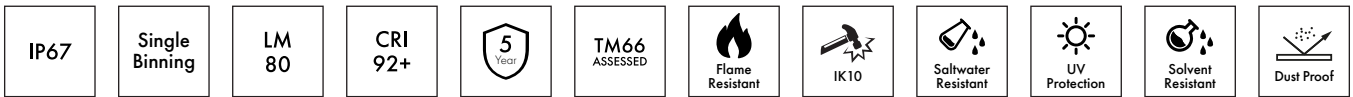




**NANO** 10W SINGLE COLOUR SIDE BEND

# NEON 0612



## DESCRIPTION

Our Single Colour Side Bend LED NEON FLEX 0612 is crafted from Dow Chemical SILASTIC™ ET-7021 silicone rubber, offering exceptional transparency and strength. Manufactured using an integrated extrusion moulding process with environmental protection grade silicone, this product features a unique optical light distribution design for a uniform, shadow-free lighting surface. We use a matt finish that is anti-dust and more robust against UV exposure, ensuring long-lasting performance and maintaining a clean, high-quality appearance over time.

## PRODUCT SPECIFICATION

Product Code	NS0612S3
Dimensions	W:6mm, H:12mm
Cutting Interval	50mm
Bend Direction	Side Bend
Minimum Bend Radius	≥25mm
Colour Temperature <sup>1</sup>	2700K, 3000K, 4000K, + More
Bin/step	Single Bin / 3SDCM
Lifetime	≥50,000 hours
Environment T <sub>a</sub>	-25°C to 55°C
IP Rating	IP67
Mounting <sup>2</sup>	Clips and Profile
Connection <sup>2</sup>	Injection Moulds
Certifications	UL, CE, RoHS

## PERFORMANCE DATA

Power Consumption	10W/m
Supply Voltage	24V DC
Lumens/Metre <sup>1</sup>	428-431 Lm/m
Lumen Efficiency <sup>1</sup>	42.8-43.1 Lm/m
L70	161,000 hours
L80	102,000 hours
Max Length	7,000mm
Beam Angle	120°
CRI	92+
Dimmable	Yes

<sup>1</sup> See Page 2 for further information. More custom colour temperatures are available upon request.

<sup>2</sup> See Page 3 for further information.



**UK BESPOKE MACHINE INJECTION MOULDING**  
Our factory-sealed ends ensure an ultra durable, waterproof and seamless installation

[FIND OUT MORE](#)



**fossLED UK Operations Centre**  
Unit C9 & C10 Lakeside, Neptune Close,  
Medway City Estate, Rochester, Kent,  
ME2 4LT, United Kingdom



[sales@fossled.co.uk](mailto:sales@fossled.co.uk)  
+44 (0)203 198 1908  
[www.fossled.com](http://www.fossled.com)  
V2-MS260511

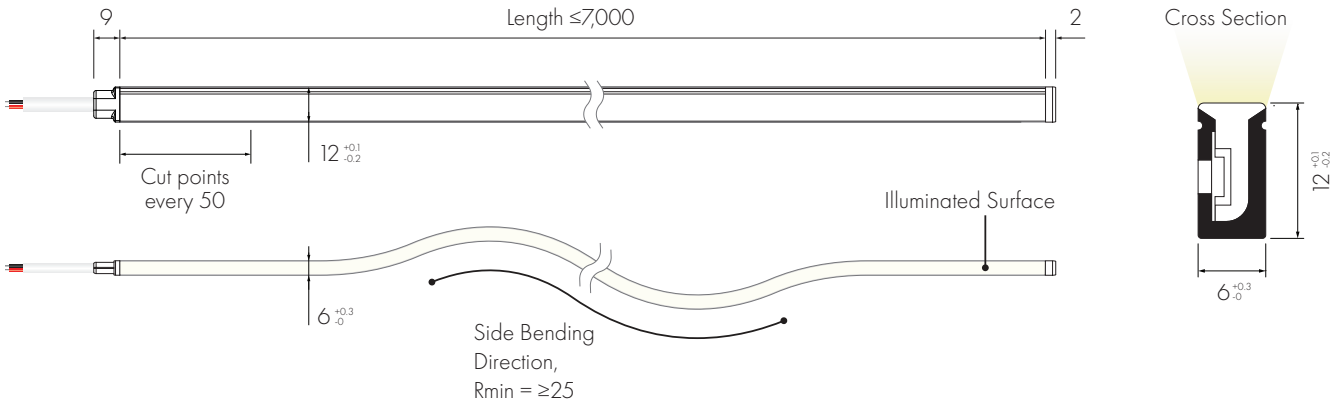


## SINGLE COLOUR TEMPERATURE DATA

CCT (K)	CRI	Voltage	Power (W/m)	Lumen (Lm/m)	Efficiency (Lm/W)	Unit Length (mm)	Max. Run Length (M)
2700K	92+	DC24V	10	428	42.8	50	7
3000K	92+	DC24V	10	430	43	50	7
4000K	92+	DC24V	10	431	43.1	50	7

The given data are typical values due to the tolerances of the production process and the electrical components, values for light output and electrical power can vary up to 10%.

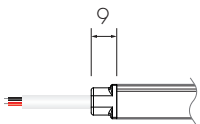
## DIMENSIONS [mm]



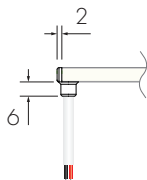
Shown with **FF** Front Feed and **EE** End Injection Moulds

## CABLE FEED/END TYPES

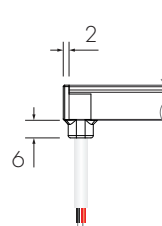
**FF/EF** Front Injection Mould



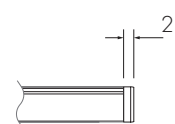
**FL/FR/EL/ER** Side Injection Mould



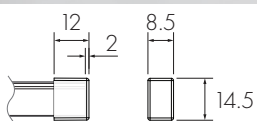
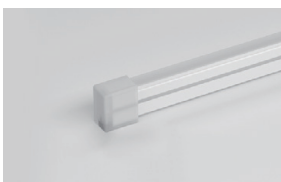
**FB/EB** Bottom Injection Mould



**EE** End Injection Mould



**EES** End Silicone Cap



fossLED UK Operations Centre  
Unit C9 & C10 Lakeside, Neptune Close,  
Medway City Estate, Rochester, Kent,  
ME2 4LT, United Kingdom

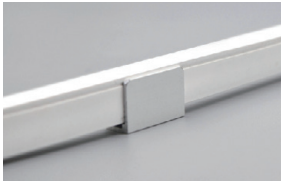


sales@fossled.co.uk  
+44 (0)203 198 1908  
www.fossled.com  
V2-MS260511

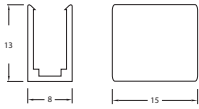


## MOUNTING OPTIONS

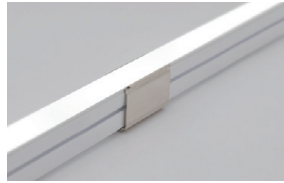
Lightweight & Durable  
**MC0612-8** Aluminium Clips



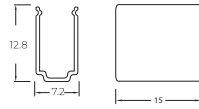
1 Clip supplied with M2.3 fixing screws  
4 Clips recommended per metre



Robust & Long-lasting  
**MC0612-SS** Stainless Steel Clips



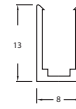
1 Clip supplied with M2.3 fixing screws  
4 Clips recommended per metre



Lightweight & Durable  
**MP0612-81M** Aluminium Profile



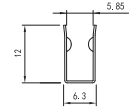
Supplied with M2.3 fixing screws  
1 metre length



Adaptive Mounting  
**FP0612-81M** Flexible Surface Profile



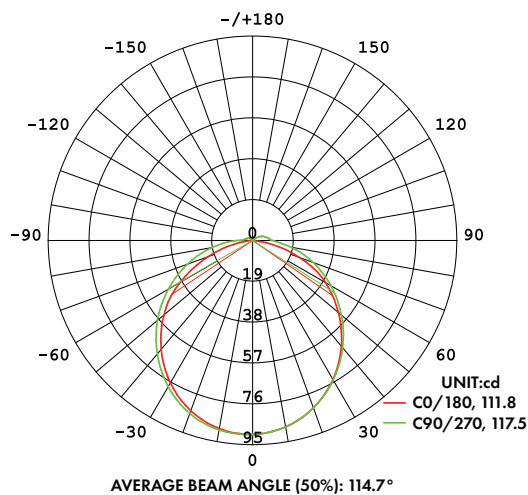
Supplied with M3 fixing screws  
1 metre length



## CABLE OPTIONS

Cable Type	Diagram	Specification	Core	Electrical Properties
Flat White Silicone Cable		Outer 4.5mm wide x 3.3mm high/Inner cores 2 x 0.5mm <sup>2</sup>		Red V+, Black V-

## LIGHT DISTRIBUTION CURVE



The given data is based on 24V, 10W/M, single colour with 4000k colour temperature.  
If you need IES files for other types please contact our sales department.

# NEON CUSTOMISATION

Follow the steps below, using our Customisation Sheet, to build your custom Neon product

[GO TO CUSTOMISATION SHEET](#) →

**1**

Confirm Nominal Code and select the required colour temperature

Nominal Code	Colour Temperature
<b>NS0612S3 -</b> Neon Side Bend 6x12mm Single Colour 10W	<b>G</b> <ul style="list-style-type: none"> <li><span style="color: orange;">●</span> <b>G</b> 2700K</li> <li><span style="color: yellow;">●</span> <b>C</b> 3000K</li> <li><span style="color: lightblue;">●</span> <b>N</b> 4000K + More colour temperatures are available upon request</li> </ul>

**2**

Choose the Product Length

Product Length
<b>50mm</b> Customised in increments set by the specified product cut points  Please note that the finished length will be effected by Feed/End Type and specified tolerances

**3**

Choose Feed Type options

Feed Type	Feed Cable Length	Feed Cable Colour
<b>FF</b> <ul style="list-style-type: none"> <li><b>FF</b> Front IP67</li> <li><b>FB</b> Bottom IP67</li> <li><b>FL</b> Left Side IP67</li> <li><b>FR</b> Right Side IP67</li> </ul>	Customised in 1m increments	<b>NF2C-0</b> Flat White Silicone Cable

**4**

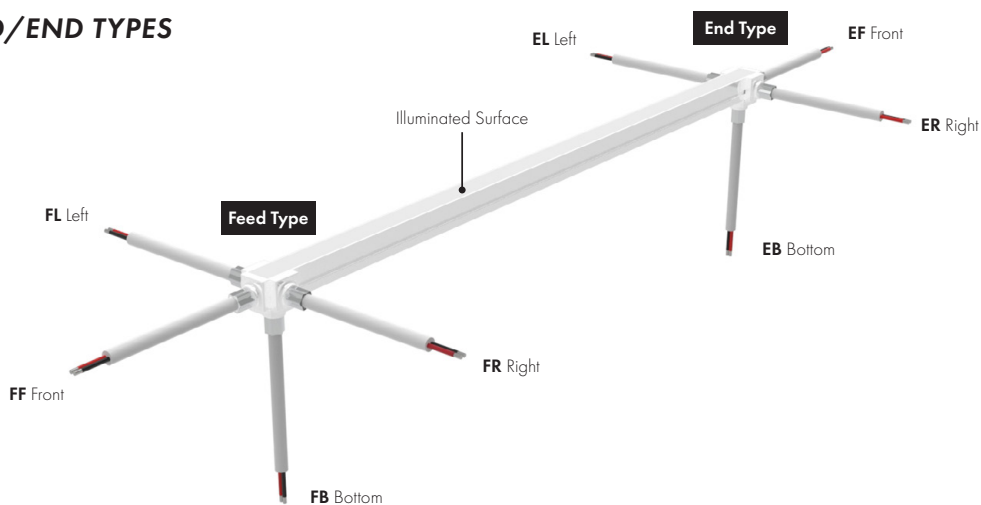
Choose End Type options

End Type	End Cable Length	End Cable Colour
<b>EE</b> <ul style="list-style-type: none"> <li><b>EE</b> End IP67</li> <li><b>EES</b> End Silicone Cap IP67</li> <li><b>EF</b> Front IP67</li> <li><b>EB</b> Bottom IP67</li> <li><b>EL</b> Left Side IP67</li> <li><b>ER</b> Right Side IP67</li> </ul>	Customised in 1m increments	<b>NF2C-0</b> Flat White Silicone Cable

**+**

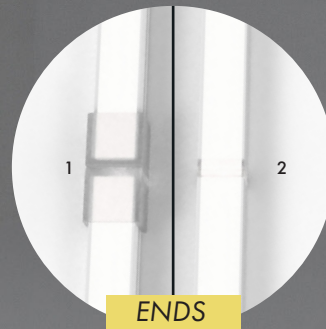
Add required Mounting options  
If additional Joined Lengths are required then repeat steps 3 and 4

## DEFINING FEED/END TYPES



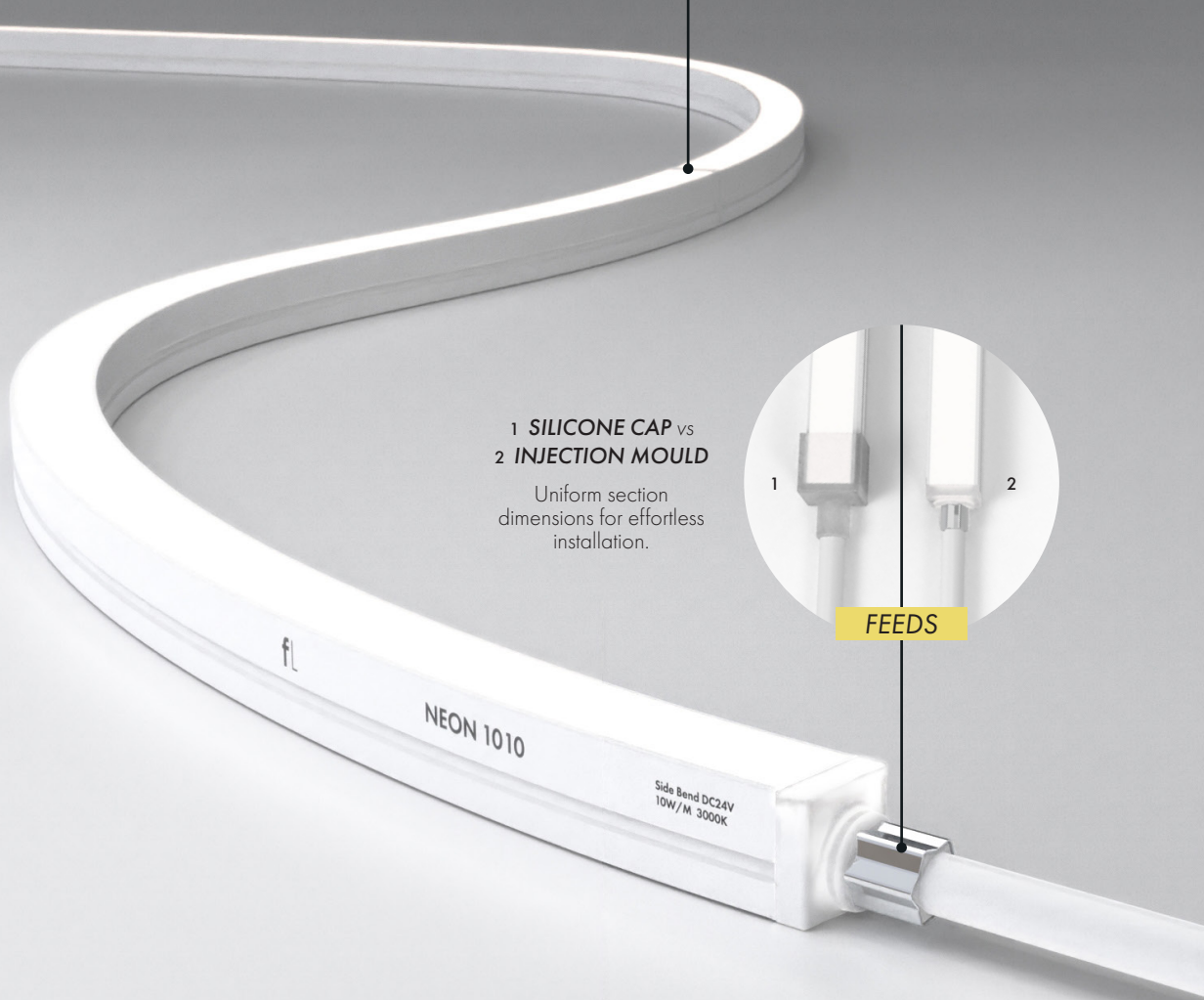
# INJECTION MOULDS

Our injection moulded ends provide a seamless, waterproof, and ultra-durable solution for a superior lighting solution. Whether for architectural, commercial, or outdoor lighting applications, our factory-sealed ends ensure flawless performance, easy installation, and a professional finish—*expertly manufactured at our UK factory.*



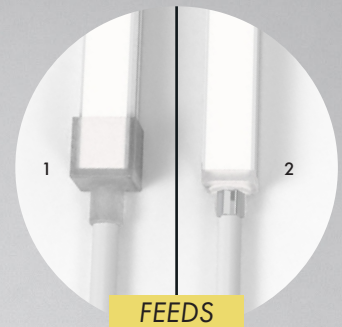
- 1 SILICONE CAP vs
- 2 INJECTION MOULD

Create a seamless finish at the end of runs and when butting two lengths together.



- 1 SILICONE CAP vs
- 2 INJECTION MOULD

Uniform section dimensions for effortless installation.



## DURABILITY & PROTECTION

Injection moulded entries ensure a robust seal, preventing water ingress, dust contamination, and moisture via capillary action for long lasting protection.

## AESTHETICS & FINISH

Injection moulded entries provide a seamless, professional finish, avoiding visible seams guaranteeing a consistent appearance across all installations.

## EFFORTLESS INSTALLATION

With uniform section dimensions and no bulky connectors or uneven fittings, injection moulded ends make installation smooth, clean, and hassle-free.