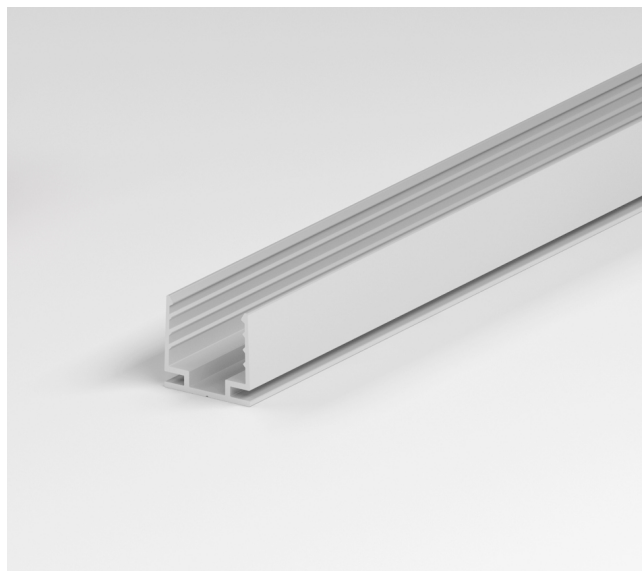


MOUNTING PROFILE

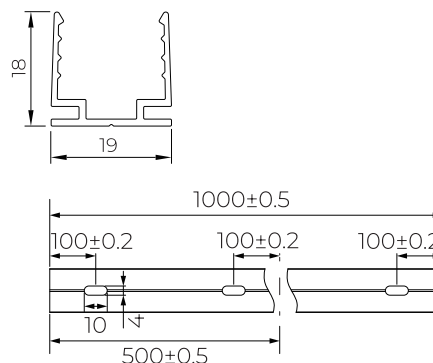
NEON 1617 - ALUMINIUM



LIGHTWEIGHT & DURABLE



DIMENSIONS [mm]



DESCRIPTION

Our mounting profiles are designed to ensure a lightweight and durable installation. Each profile is made from extruded aluminium and includes fixing screws.

PRODUCT SPECIFICATION

Dimensions	L: 1000mm, W: 19mm, H: 18mm
Material	Aluminium
Fixing Type	M3x16 fixing screws
Compatible Series	NEON 1617
Certifications	UL, CE, RoHS
Product Code	MP1617-81M