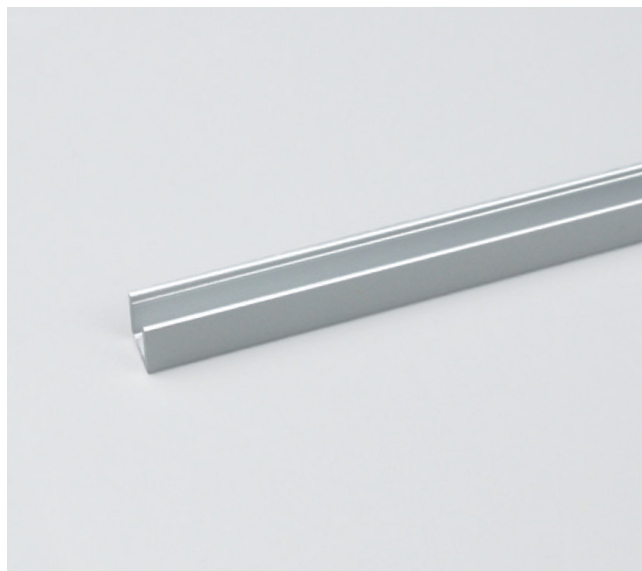


# MOUNTING PROFILE

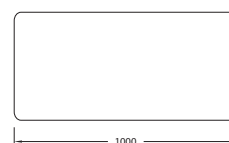
NEON 0408 - ALUMINIUM



LIGHTWEIGHT & DURABLE



## DIMENSIONS [mm]



## DESCRIPTION

Our mounting profiles are designed to ensure a lightweight and durable installation. Each profile is made from extruded aluminium and includes fixing screws.

## PRODUCT SPECIFICATION

Dimensions	L: 1000mm, W: 6.5mm, H: 7.2mm
Material	Aluminium
Fixing Type	M2.3x16 fixing screws
Compatible Series	NEON 0408
Certifications	UL, CE, RoHS
Product Code	<b>MP0408-81M</b>