

FREE CUT NANO 6W SINGLE COLOUR TOP BEND

# NEON 0606

IP44

Single  
Binning

LM  
80

CRI  
92+

5  
Year

TM66  
ASSESSED

Flame  
Resistant

IK10

Saltwater  
Resistant

UV  
Protection

Solvent  
Resistant

Dust Proof

## DESCRIPTION

Our Single Colour Top Bend LED NEON FLEX 0606 is crafted from Dow Chemical SILASTIC™ ET-7021 silicone rubber, offering exceptional transparency and strength. Manufactured using an integrated extrusion moulding process with environmental protection grade silicone, this product features a unique optical light distribution design for a uniform, shadow-free lighting surface. We use a matt finish that is anti-dust and more robust against UV exposure, ensuring long-lasting performance and maintaining a clean, high-quality appearance over time.

## PRODUCT SPECIFICATION

Product Code	NT0606S1
Dimensions	W:6mm, H:6mm
Cutting Interval	8.33mm
Bend Direction	Top Bend
Minimum Bend Radius	≥25mm
Colour Temperature <sup>1</sup>	2700K, 3000K, 4000K, + More
Bin/step	Single Bin
Lifetime	≥50,000 hours
Environment Ta	-25°C to 55°C
IP Rating	IP44
Mounting <sup>2</sup>	Clips and Profile
Connection <sup>1</sup>	Integrated Caps
Certifications	UL, CE, RoHS

## PERFORMANCE DATA

Power Consumption	6W/m
Supply Voltage	24V DC
Lumens/Metre <sup>1</sup>	420-440 Lm/m
Lumen Efficiency <sup>1</sup>	70-73.3 Lm/m
L70	63,000 hours
L80	40,000 hours
Max Length	5,000mm
Beam Angle	120°
CRI	92+
Dimmable	Yes

<sup>1</sup> See Page 2 for further information. More custom colour temperatures are available upon request.

<sup>2</sup> See Page 3 for further information.



UK MARKET LEADING **INTEGRATED CAPS**

Our expertly sealed ends guarantee a sleek installed finish

FIND OUT MORE



fossLED UK Operations Centre  
Unit C9 & C10 Lakeside, Neptune Close,  
Medway City Estate, Rochester, Kent,  
ME2 4LT, United Kingdom



sales@fossled.co.uk  
+44 (0)203 198 1908  
www.fossled.com  
V1-MS250703

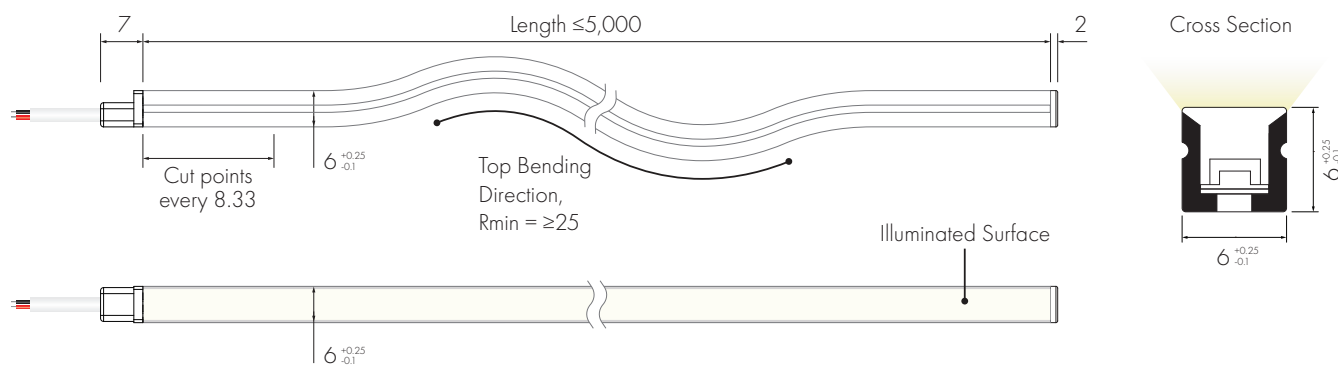


## SINGLE COLOUR TEMPERATURE DATA

CCT (K)	CRI	Voltage	Power (W/m)	Lumen (Lm/m)	Efficiency (Lm/W)	Unit Length (mm)	Max. Run Length (M)
2700K	92+	DC24V	6	420	70	8.33	5
3000K	92+	DC24V	6	435	72.5	8.33	5
4000K	92+	DC24V	6	440	73.3	8.33	5

The given data are typical values due to the tolerances of the production process and the electrical components, values for light output and electrical power can vary up to 10%.

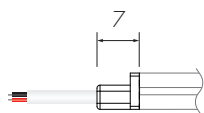
## DIMENSIONS [mm]



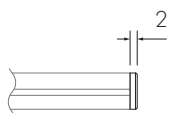
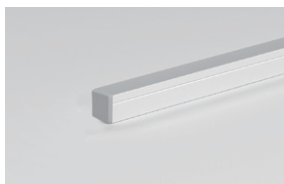
Shown with **FFI** Front Feed Integrated Cap and **EI** End Integrated Cap

## CABLE FEED/END TYPES

**FFI** Front Feed Integrated Cap



**EI** End Integrated Cap

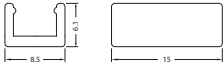


MOUNTING OPTIONS

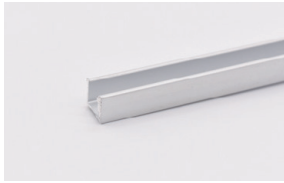
Lightweight & Durable  
MC0606-8 Aluminium Clips



1 Clip supplied with M2.3 fixing screws  
4 Clips recommended per metre



Lightweight & Durable  
MP0606-81M Aluminium Profile



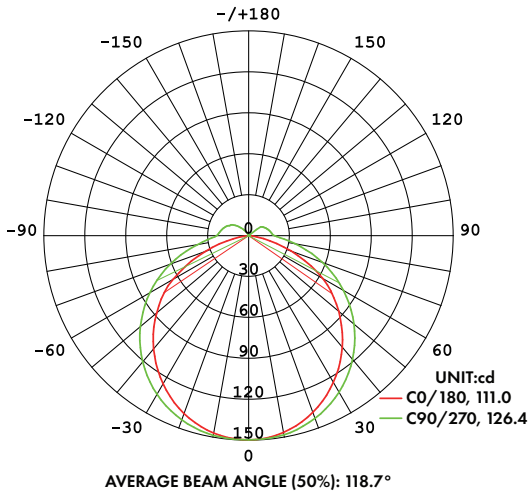
Supplied with M2.3 fixing screws  
1 metre length



CABLE OPTIONS

Cable Type	Diagram	Specification	Core	Electrical Properties
PVC Cable		Inner cores 2 x 0.35mm <sup>2</sup>	● ●	Red V+, Black V-

LIGHT DISTRIBUTION CURVE



The given data is based on 24V, 6W/M, single colour with 4000k colour temperature.  
If you need IES files for other types please contact our sales department.

## NEON CUSTOMISATION

Follow the steps below, using our Customisation Sheet, to build your custom Neon product

[GO TO CUSTOMISATION SHEET](#) →

1

Confirm Nominal Code and select the required colour temperature

Nominal Code

**NT0606S1 -**

Neon Top Bend 6x6mm  
Single Colour 6W

Colour Temperature

**G**

-  **G** 2700K  
 **C** 3000K  
 **N** 4000K + More colour temperatures are available upon request

2

Choose the Product Length

Product Length

**8.33mm**

Customised in increments set by the specified product cut points

Please note that the finished length will be effected by Feed/End Type and specified tolerances

3

Choose Feed Type options

Feed Type

**FFI**

**FFI** Front Integrated Cap IP44

Feed Cable Length

**1m**

Customised in 1m increments

Feed Cable Type

**FN2C**

  **FN2C** PVC Cable

4

Choose End Type options

End Type

**EEI**

**EEI** End Integrated Cap IP44

End Cable Length

**-**

Customised in 1m increments

End Cable Type

**-**

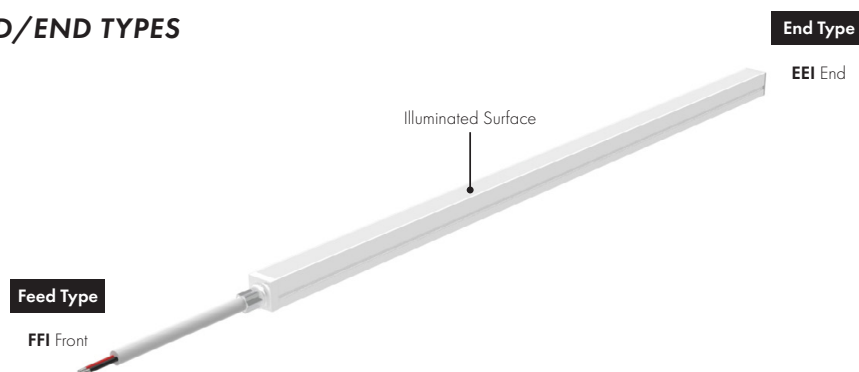
  **EN2C** PVC Cable

+

Add required Mounting options

If additional Joined Lengths are required then repeat steps 3 and 4

## DEFINING FEED/END TYPES



# INTEGRATED CAPS

Our integrated caps offer a sleek, durable, and reliable solution for neon lighting installations. Precision-engineered and expertly fitted by our skilled factory team, these caps provide a flawless finish, straightforward installation, and consistent performance, making them ideal for architectural, commercial, and indoor applications.



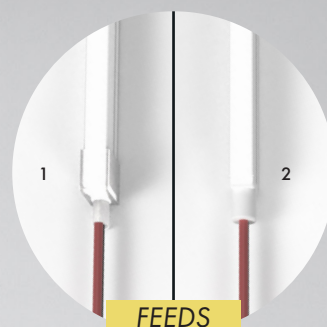
1 **SILICONE CAP** vs  
2 **INTEGRATED CAP**

Achieve a clean, professional finish at the end of runs and when joining two lengths together.

ENDS

1 **SILICONE CAP** vs  
2 **INTEGRATED CAP**

Uniform section dimensions for effortless installation.



FEEDS

## DURABILITY & RELIABILITY

Integrated caps provide a dependable seal that prevents dust and debris ingress. Factory-fitted by our experienced team, they ensure a consistent and professional result.

## AESTHETICS & FINISH

With a precise flush fit, integrated caps deliver a high end finish that enhances the overall appearance and professionalism of any installation.

## EFFORTLESS INSTALLATION

With uniform section dimensions and no bulky connectors or uneven fittings, integrated caps make installation smooth, clean, and hassle-free.