



FREE CUT NANO 6W SINGLE COLOUR SIDE BEND

NEON 0408

IP44

Single Binning

LM 80

CRI 92+

5 Year

TM66 ASSESSED

Flame Resistant

Saltwater Resistant

UV Protection

Solvent Resistant

Dust Proof

DESCRIPTION

Our Single Colour Side Bend LED NEON FLEX 0408 is crafted from Dow Chemical SILASTIC™ ET-7021 silicone rubber, offering exceptional transparency and strength. Manufactured using an integrated extrusion moulding process with environmental protection grade silicone, this product features a unique optical light distribution design for a uniform, shadow-free lighting surface. We use a matt finish that is anti-dust and more robust against UV exposure, ensuring long-lasting performance and maintaining a clean, high-quality appearance over time.

PRODUCT SPECIFICATION

Product Code	NS0408S1
Dimensions	W:4mm, H:8mm
Cutting Interval	8.33mm
Bend Direction	Side Bend
Minimum Bend Radius	≥15mm
Colour Temperature ¹	2700K, 3000K, 4000K, + More
Bin/step	Single Bin
Lifetime	≥50,000 hours
Environment Ta	-25°C to 55°C
IP Rating	IP44
Mounting ²	Clips and Profile
Connection ²	Integrated Caps
Certifications	UL, CE, RoHS

PERFORMANCE DATA

Power Consumption	6W/m
Supply Voltage	24V DC
Lumens/Metre ¹	205-231 Lm/m
Lumen Efficiency ¹	34.2-38.5 Lm/m
L70	63,000 hours
L80	40,000 hours
Max Length	5,000mm
Beam Angle	120°
CRI	92+
Dimmable	Yes

¹ See Page 2 for further information. More custom colour temperatures are available upon request.

² See Page 3 for further information.

 **UK MARKET LEADING INTEGRATED CAPS**
Our expertly sealed ends guarantee a sleek installed finish

FIND OUT MORE →

fossLED UK Operations Centre
Unit C9 & C10 Lakeside, Neptune Close,
Medway City Estate, Rochester, Kent,
ME2 4LT, United Kingdom



sales@fossled.co.uk
+44 (0)203 198 1908
www.fossled.com
V1-MS250703

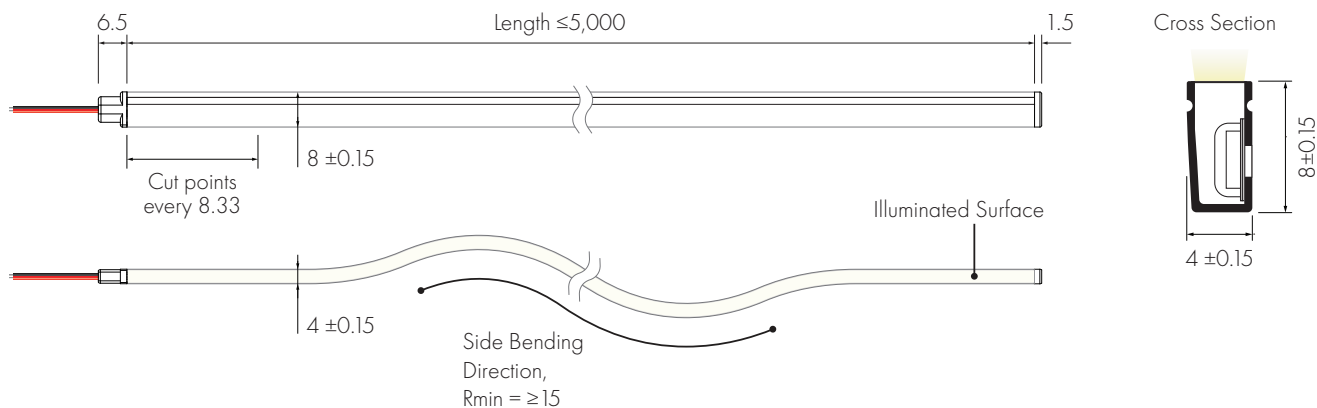


SINGLE COLOUR TEMPERATURE DATA

CCT (K)	CRI	Voltage	Power (W/m)	Lumen (Lm/m)	Efficiency (Lm/W)	Unit Length (mm)	Max. Run Length (M)
2700K	92+	DC24V	6	205	34.2	8.33	5
3000K	92+	DC24V	6	227	37.8	8.33	5
4000K	92+	DC24V	6	231	38.5	8.33	5

The given data are typical values due to the tolerances of the production process and the electrical components, values for light output and electrical power can vary up to 10%.

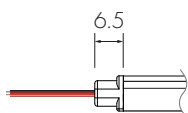
DIMENSIONS [mm]



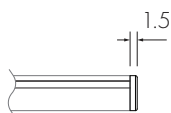
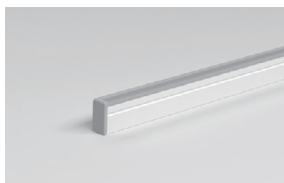
Shown with **FFI** Front Feed Integrated Cap and **EEL** End Integrated Cap

CABLE FEED/END TYPES

FFI Front Feed Integrated Cap



EEL End Integrated Cap



MOUNTING OPTIONS

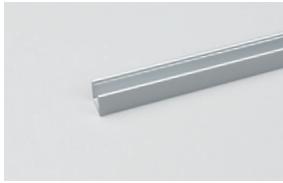
Lightweight & Durable
MC0408-8 Aluminium Clips



1 Clip supplied with M2.3 fixing screws
4 Clips recommended per metre



Lightweight & Durable
MP0408-81M Aluminium Profile



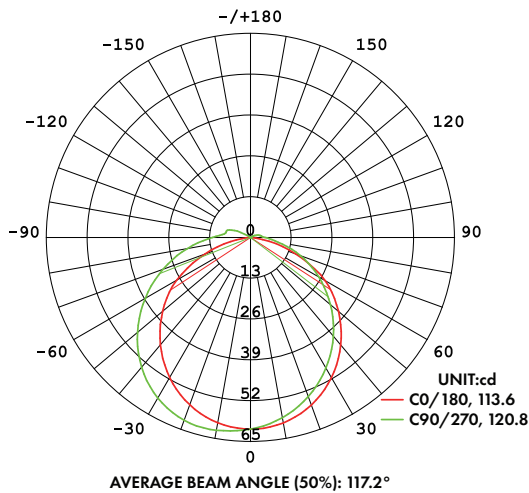
Supplied with M2.3 fixing screws
1 metre length



CABLE OPTIONS

Cable Type	Diagram	Specification	Core	Electrical Properties
PVC Cable		Inner cores 2 x 0.5mm ²	● ●	Red V+, Black V-

LIGHT DISTRIBUTION CURVE



The given data is based on 24V, 6W/M, single colour with 4000k colour temperature.
If you need IES files for other types please contact our sales department.

NEON CUSTOMISATION

Follow the steps below, using our Customisation Sheet, to build your custom Neon product

[GO TO CUSTOMISATION SHEET](#) →

1

Confirm Nominal Code and select the required colour temperature

Nominal Code

NS0408S1 -

Neon Side Bend 4x8mm
Single Colour 6W

Colour Temperature

G

G 2700K
C 3000K
N 4000K + More colour temperatures are available upon request

2

Choose the Product Length

Product Length

8.33mm

Customised in increments set by the specified product cut points

Please note that the finished length will be effected by Feed/End Type and specified tolerances

3

Choose Feed Type options

Feed Type

FFI

FFI Front Integrated Cap IP44

Feed Cable Length

1 m

Customised in 1m increments

Feed Cable Colour

FN2C

FN2C PVC Cable

4

Choose End Type options

End Type

EEI

EEI End Integrated Cap IP44

End Cable Length

-

Customised in 1m increments

End Cable Colour

-

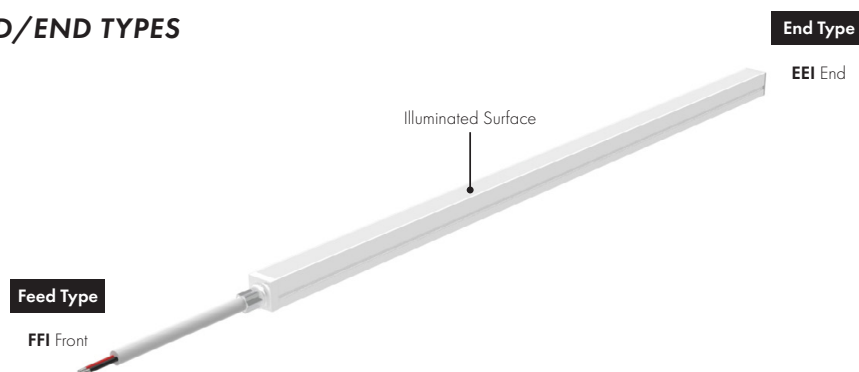
EN2C PVC Cable

+

Add required Mounting options

If additional Joined Lengths are required then repeat steps 3 and 4

DEFINING FEED/END TYPES



fossLED UK Operations Centre
Unit C9 & C10 Lakeside, Neptune Close,
Medway City Estate, Rochester, Kent,
ME2 4LT, United Kingdom



sales@fossled.co.uk
+44 (0)203 198 1908
www.fossled.com
V1-MS250703



INTEGRATED CAPS

Our integrated caps offer a sleek, durable, and reliable solution for neon lighting installations. Precision-engineered and expertly fitted by our skilled factory team, these caps provide a flawless finish, straightforward installation, and consistent performance, making them ideal for architectural, commercial, and indoor applications.



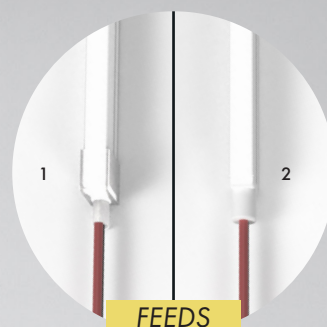
1 **SILICONE CAP** vs
2 **INTEGRATED CAP**

Achieve a clean, professional finish at the end of runs and when joining two lengths together.

ENDS

1 **SILICONE CAP** vs
2 **INTEGRATED CAP**

Uniform section dimensions for effortless installation.



FEEDS

DURABILITY & RELIABILITY

Integrated caps provide a dependable seal that prevents dust and debris ingress. Factory-fitted by our experienced team, they ensure a consistent and professional result.

AESTHETICS & FINISH

With a precise flush fit, integrated caps deliver a high end finish that enhances the overall appearance and professionalism of any installation.

EFFORTLESS INSTALLATION

With uniform section dimensions and no bulky connectors or uneven fittings, integrated caps make installation smooth, clean, and hassle-free.