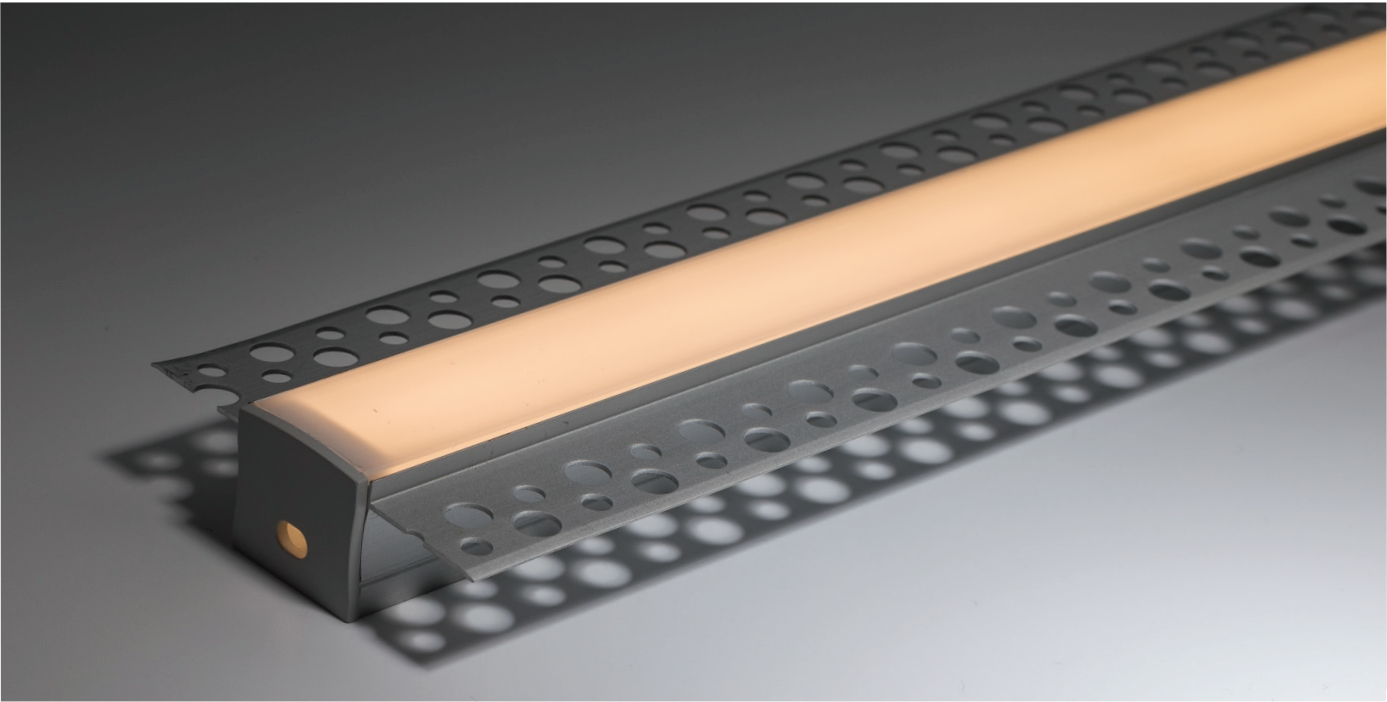


Plaster In PRO - 63 x 20

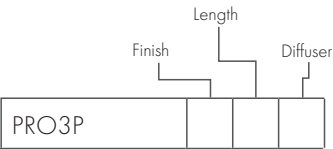
PRO3P - XXX



PRO

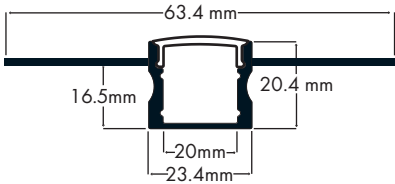


Product Reference:



|       |           |            |          |
|-------|-----------|------------|----------|
| PRO3P | Finish    | Length     | Diffuser |
| 8     | Aluminium | 1m 1 metre | O Opal   |
| 2m    |           | 2 metre    | C Clear  |

Diagram:



As standard, our Plaster In profiles come with a polyfoam filler designed to simplify installation. Insert the filler into the channel before plastering, leaving one end exposed. Once the plaster has dried, simply remove the filler to reveal a clean, precise finish.

Each metre of Profile also comes with 2 Clips + End Caps as standard; for extra packs please quote code PRO3P-8AC.

Client

Date

Project Ref

Product Ref

Quantity