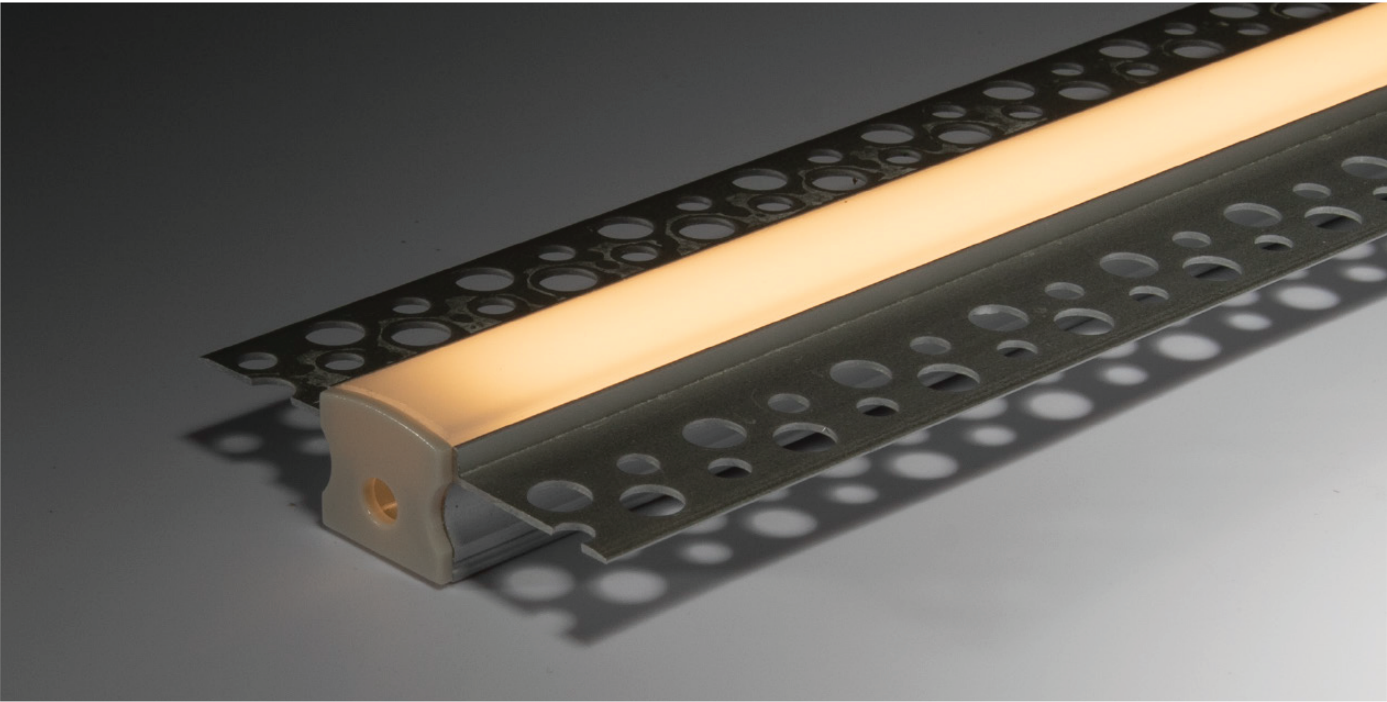


Plaster In PRO - 57 x 14

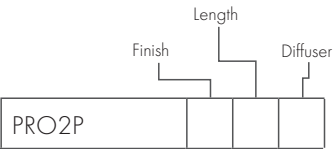
PRO2P - XXX



PRO

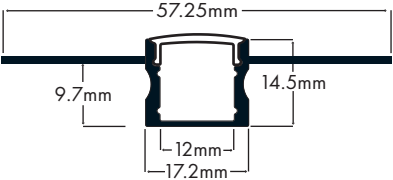


Product Reference:



PRO2P	Finish	Length	Diffuser
	8 Aluminium	1m 1 metre	O Opal
		2m 2 metre	C Clear

Diagram:



As standard, our Plaster In profiles come with a polyfoam filler designed to simplify installation. Insert the filler into the channel before plastering, leaving one end exposed. Once the plaster has dried, simply remove the filler to reveal a clean, precise finish.

Each metre of Profile also comes with 2 Clips + End Caps as standard; for extra packs please quote code PRO2P-8AC.

Client _____

Date _____

Project Ref _____

Product Ref _____

Quantity _____